

STOREFIT



SHOPFITTING SPECIALIST
FOR THE FOOD RETAIL INDUSTRY

CATALOGUE 2024

www.store-fit.com



About Us

For nearly 2 decades we develop and manufacture competitive high quality equipment for Food Service businesses and Food retailers

Our Customers

Every day, our equipment is used by world-leading Hotels, restaurants and retail chains in more than 50 countries

Quality meets competitiveness



Storefit is a brand of SIS Group, manufacturer and distributor of Food Service and Food Retail equipment with 2 manufacturing facilities in China and sales/after sales offices in Europe and Asia.

Our story started nearly 2 decades ago as a subcontractor for major European manufacturers of food service equipment. Today we design and manufacture our range according to European quality standards in our 2 factories in Ningbo and Qingdao, ensuring our customers high quality equipment at a competitive price.

Thanks to our constant focus on choice, affordability and service, we are today the partner of world leading Hotels, Restaurant, Food retailers, bakeries and speciality stores in more than 50 countries.



Quality

We manufacture our products according to European quality standards. We choose our spare parts from the best European manufacturers and most of our range have the CE certification.



Affordability

Thanks to our 2 facilities in China, we ensure you get the most competitive price and terms available on the market. We deliver from our China facility to your site directly almost anywhere in the world.



Service

We provide a complete range of service from the design of the project to the installation on site and maintenance, through our own subsidiaries or by a network of qualified local partners in 25 countries.

FOOD RETAILERS



HORECA CHAINS



INDUSTRIES



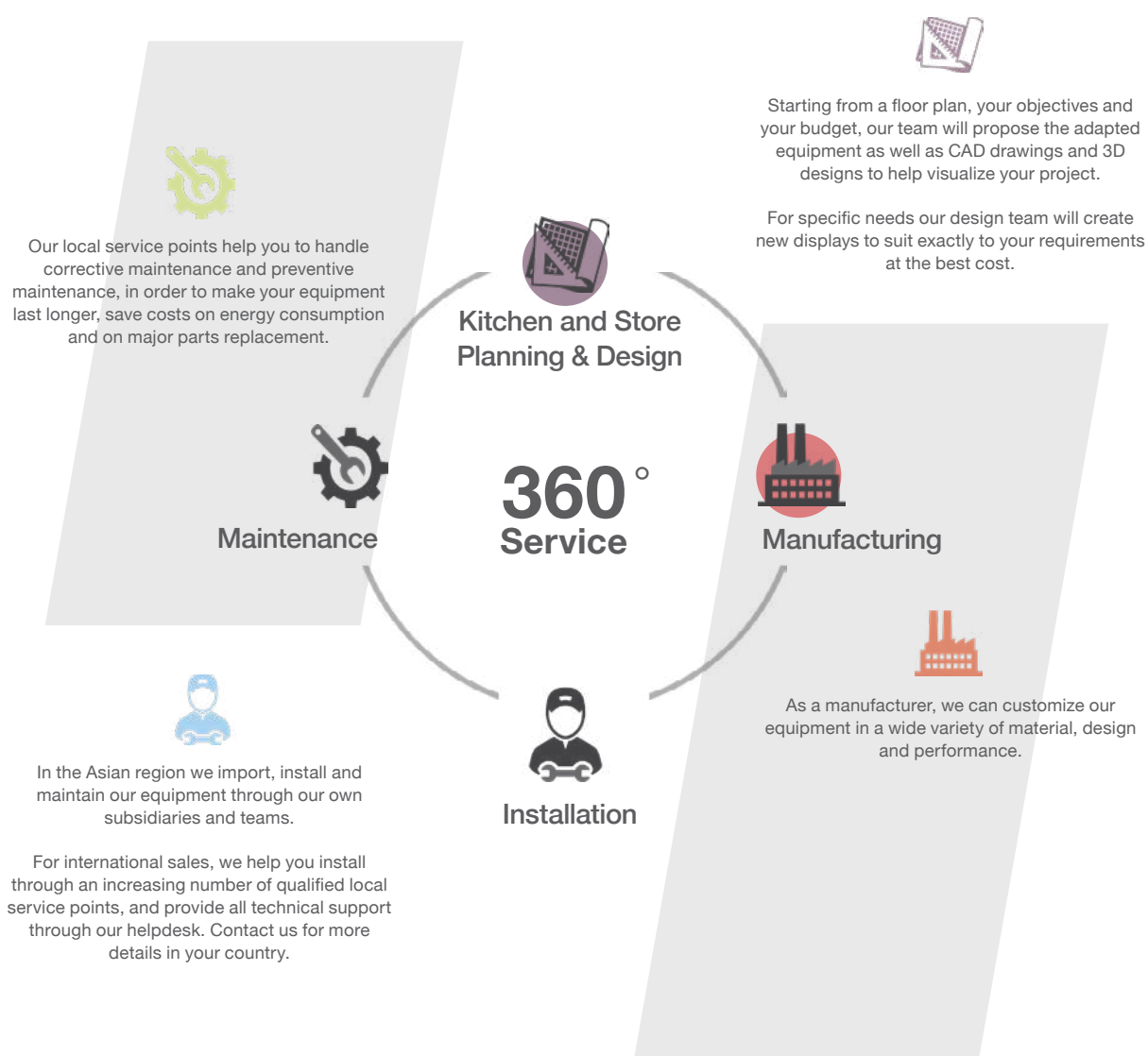


Our Expertise

We aim to deliver more than quality products and support our clients through a 360° solution, from the design to the installation and maintenance

Our Markets and Service Network

With an extensive product range and technical service points in 25 countries, we offer a complete solution for most food service and food retail formats



Our Markets

For nearly 20 years we have supplied adapted equipment solutions for each of these specific segments.



Hotels & restaurants



Coffees, bars & bakeries



Food retailers



Food industries



Schools, hospitals & workplaces

Our Service Network

In Asia we import, install and maintain our equipment through our own subsidiaries and teams in China, Thailand, Vietnam, Myanmar, Laos and Cambodia.

For international sales, we deliver from our China facility to your site directly almost anywhere in the world. We help you for the installation process and maintenance through an increasing number of local service points, contact us for more details.

You would like to be part of our local service points network?

Contact our team at sales@store-fit.com



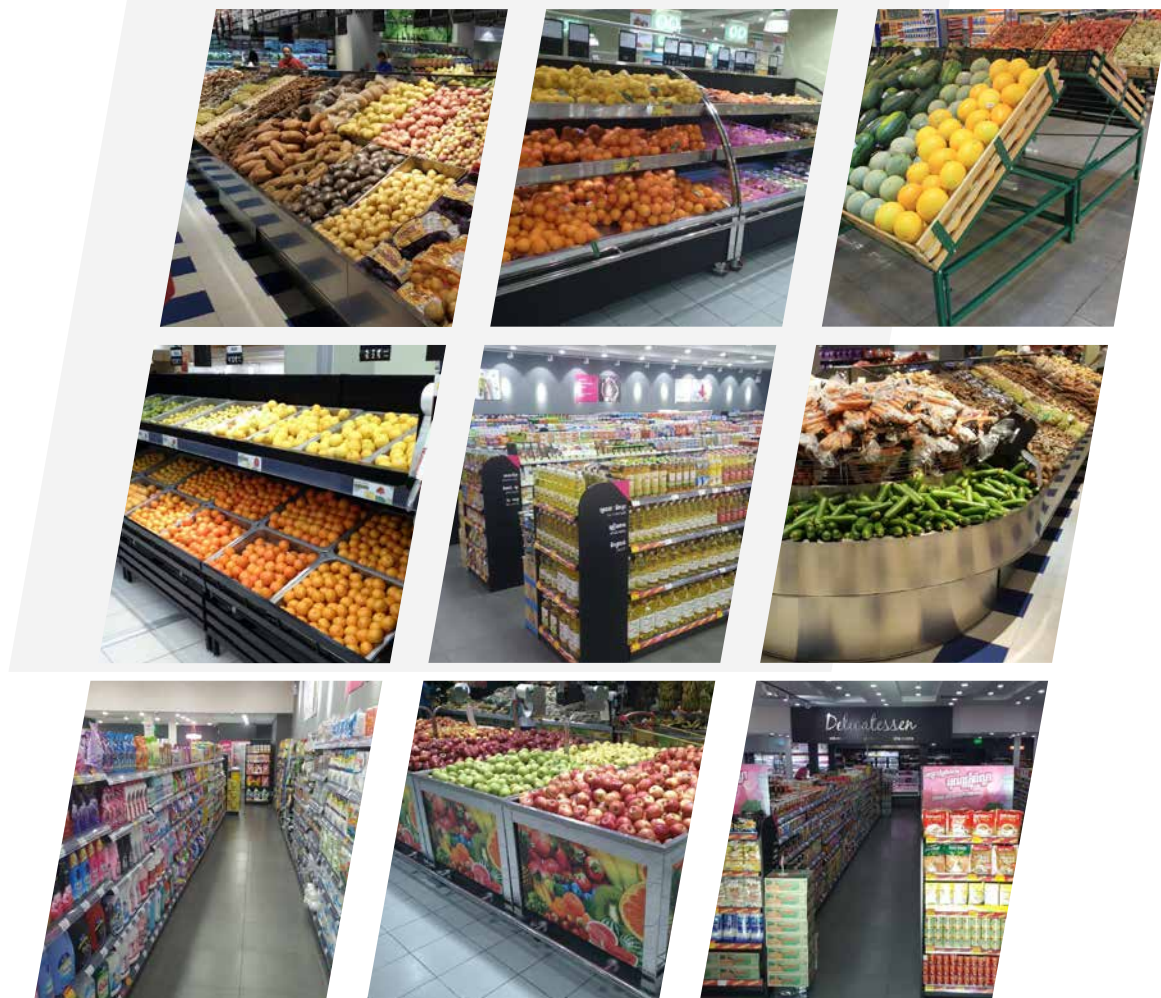
STOREFIT

STOREFIT

Our Projects

Our Projects

For nearly 2 decades we have manufactured high quality equipment used today by thousands of shops and restaurants all over the world.





Our Products

FRESH DISPLAYS

Vegetable and fruits area	p.10
Bakery area	p.26
Fish counters	p.40
Fish tanks	p.45

FRESH LABORATORIES EQUIPMENT

Preparation tables	p.50
Cutting tables	p.53
Sink units	p.58
Handwash basins	p.60
Cabinets	p.65
Stainless steel trolleys	p.67
Bins	p.72
Exhaust hoods	p.73
Stainless steel shelving	p.74
Wall shelves	p.75
Ice trolleys	p.76
Insulated pan carriers	p.76
Insulated drink servers	p.78
Dish caddies	p.78
Mobile plate racks	p.79

FRESH AREA ACCESSORIES

Plastic rattan baskets	p.81
Plastic crates	p.82
Fruit and vegetable fences	p.85
Fruit and vegetable stands	p.87
Bag holders	p.91
Shelf dividers and rollers	p.92
Stainless steel food pans	p.94
PC food pans	p.96
ABS trays	p.97
PC GN trays	p.98
PP non-slip trays	p.98
Fibreglass slip trays	p.99
Baking trays	p.100
Stainless steel grids	p.102

DRY FOOD DISPLAYS AND GONDOLAS

Dry food displays	p.104
Grain displays	p.113
Grain dispensers	p.115
Gondolas	p.121

Our Products

WAREHOUSE SHELVING AND TROLLEYS

Warehouse racks	p.131
Cold room in aluminium shelving	p.134
Cold room with PP coated shelving	p.136
Wire shelving	p.139
Storage cages	p.141
Roll containers	p.143
Ladder trolleys	p.147
Plastic pallets	p.149

CHECKOUT COUNTERS AND GATES

Checkout counters	p.151
Swing gates	p.160

SHOPPING TROLLEYS

Wire shopping trolleys	p.164
Plastic shopping trolleys	p.169
Hand basket trolleys	p.171
Children's trolleys	p.177
Special trolleys	p.179
Flat trolleys	p.181

SHOPPING BASKETS

Plastic shopping baskets	p.188
Wire shopping baskets	p.194
Rolling baskets	p.195

SHOPPING BAGS AND FOOD CONTAINERS

PP reusable shopping bags	p.201
Cotton and jute shopping bags	p.201
Paper bags and packaging	p.202
Compostable starch bags	p.203
Plastic bags	p.203
Carton food packaging	p.204
Bagasse food containers	p.204
Aluminium food containers	p.205
Plastic food containers	p.205

Are you looking for a specific product not in our catalogue?

We are specialists of tailor made projects, contact us to inquire about product development or customisation possibilities.





FRESH DISPLAYS

Vegetables and fruits areap.10
 Bakery areap.26
 Fish countersp.40
 Fish tanksp.45

Vegetables and Fruits Area

- Material: Stainless steel 304
- Size and colour can be customised

SALAD BAR ISLAND



Ref. No
STF14001

JUICE BAR ISLAND



Ref. No
STF14002

Vegetables and Fruits Area

- Material: Stainless steel 304
- Size and colour can be customised

STAINLESS STEEL VEGETABLE RACK - ROUND CORNER UNIT



Ref. No
STF14003

STAINLESS STEEL VEGETABLE RACK - SIDE UNIT



Ref. No
STF14004

STAINLESS STEEL VEGETABLE RACK - PROMOTIONAL UNIT



Ref. No
STF14005

Vegetables and Fruits Area

- Material: Stainless steel 304
- Size and colour can be customised

STAINLESS STEEL VEGETABLE RACK - PROMOTIONAL UNIT



Ref. No
STF14006

- Material: Stainless steel 304 countertop
- 304 stainless steel sprayed plastic enclosure
- With guard rail
- With stainless steel bottoms

STAINLESS STEEL LEAFY VEGETABLE SPRAY RACK



Type	Ref. No	EXT Dimension (mm)
	STF14007	1200x800x1250
Spray tube	STF14008	1200x300x1400
Sprayer	STF14009	/

Vegetables and Fruits Area

- Body made in stainless steel tube
- The top can be raised and lowered
- Flip-up bottom door panel
- Stainless steel basin, 6cm deep
- 1-3 tiers are available
- Size and colour can be customised

STAINLESS STEEL VEGETABLE RACK



Type	Ref. No	EXT Dimension (mm)
	STF14010	1200x800x1600
	STF14011	1600x800x1600
	STF14012	1800x800x1600
Side door	STF14013	/

STAINLESS STEEL VEGETABLE RACK - E UNIT



Ref. No	EXT Dimension (mm)
STF14014	1600x800x850

Vegetables and Fruits Area

- Body made in stainless steel tube
- Bottom in painted steel, stainless steel is optional
- Flip-up bottom door panel
- Stainless steel basin, 6cm deep
- The top can be raised and lowered
- 1-3 tiers are available
- Size and colour can be customised

STAINLESS STEEL VEGETABLE RACK - SQUARE UNIT



Ref. No	EXT Dimension (mm)
STF14015	800x800x800

- Body made in stainless steel tube
- Flip-up bottom door panel
- Stainless steel step display top with holes
- Large display capacity, 3-steps display
- Size and colour can be customised

STAINLESS STEEL VEGETABLE RACK WITH SPRAY



Type	Ref. No	EXT Dimension (mm)
Main rack	STF14016	1200x830x1450
End rack	STF14017	1760x830x1450
Stainless steel pipe	STF14018	per meter
Sprayer	STF14019	/

Vegetables and Fruits Area

- Body made in stainless steel and wood
- Flip-up door panel
- Stainless steel step display top with pipe
- Large display capacity, 3-steps display
- Size and colour can be customised

STEEL AND WOOD VEGETABLE RACK WITH MIST SYSTEM



Type	Ref. No	EXT Dimension (mm)
	STF14020	1200x830x1450
	STF14021	1760x830x1450
Display pipe	STF14022	by meter
Sprayer	STF14023	/

- Bottom part made of 1.0mm iron square tube, cold rolled plate and 14-15mm multi-layer board
- Surface is black and silver sprayed
- Plastic fence

STEEL AND WOOD RECTANGULAR VEGETABLE ISLAND RACK



Ref. No	Dimension (mm)	QTY (pcs)	EXT Dimension (mm)	
STF14024	Middle rack	1000x800	4	
	End rack	1600x800	2	
	Wooden middle base	1000x650x200	4	3600x1600x1710
	Wooden end base	1300x650x200	2	
	Wooden ad board	560x420x25	2	

Vegetables and Fruits Area

- All wood 14-15mm structure
- Stainless steel 201 edge

VEGETABLE ISLAND WOOD RACK



Ref. No	Dimension (mm)	QTY (pcs)	EXT Dimension (mm)	
STF14025	Middle rack	1200x800	4	
	End rack	1600x800	2	
	Big rattan basket	500x360x100	15	4000x1600x2140
	Small rattan basket	380x320x100	15	
	Wooden ad board	560x420x25	2	

- Bottom part made of iron square tube and cold rolled plate, thickness of 1.0mm
- Surface is black and silver sprayed
- Sliding door panels and multi-layer board
- Cold rolled steel 6cm deep basin, can be raised and lowered
- 1 to 3 tiers are available
- Size and colour can be customised

STEEL AND WOOD VEGETABLE RACK - ISLAND UNIT



Ref. No	EXT Dimension (mm)
STF14032	1200x800x800
STF14033	1600x800x800

Vegetables and Fruits Area

- Bottom part made of iron square tube and cold rolled plate, thickness of 1.0mm
- Surface is black and silver sprayed
- Sliding door panels and multi-layer board
- Cold rolled steel 6cm deep basin, can be raised and lowered
- 1 to 3 tiers are available
- Size and colour can be customised

STEEL AND WOOD VEGETABLE RACK



Type	Ref. No	EXT Dimension (mm)
	STF14026	1200x800x1600
	STF14027	1600x800x1600
	STF14028	1800x800x1600
Side door	STF14029	/

STEEL AND WOOD VEGETABLE RACK - END UNIT



Ref. No	EXT Dimension (mm)
STF14030	1600x800x830

Vegetables and Fruits Area

- Bottom part made of iron square tube and cold rolled plate, thickness of 1.0mm
- Surface is black and silver sprayed
- Sliding door panels and multi-layer board
- Cold rolled steel 6cm deep basin, can be raised and lowered
- 1 to 3 tiers are available
- Size and colour can be customised

STEEL AND WOOD VEGETABLE RACK - SQUARE UNIT



Ref. No	EXT Dimension (mm)
STF14031	800x800x800

STEEL AND WOOD VEGETABLE RACK - SQUARE UNIT



Ref. No	EXT Dimension (mm)
STF14034	800x800x800

Vegetables and Fruits Area

- Bottom part made of 1.0mm cold rolled steel square tube
- Flip-up door panel and multi-layer board
- Side door and acrylic fence
- Bumper in stainless steel
- Plastic 6cm deep basin on a top that can be raised and lowered
- 1 to 3 tiers are available
- Size and colour can be customised

STEEL AND WOOD VEGETABLE RACK



Ref. No EXT Dimension (mm)
STF14035 1200x950x1650

- Bottom part made of iron square tube and cold rolled plate, thickness of 1.0mm
- Surface is black and silver sprayed
- Sliding door panels and multi-layer board
- Cold rolled steel 6cm deep basin, can be raised and lowered
- 1 to 3 tiers are available
- Size and colour can be customised

STEEL AND WOOD VEGETABLE RACK



Ref. No EXT Dimension (mm)
STF14036 1200x950x1650

Vegetables and Fruits Area

- Iron pipe welding
- 3-layer display structure, non-adjustable
- Adjustable bottom feet
- Bottom cabinet door with transfer wood grain printing
- Matching price bar

STEEL AND WOOD VEGETABLE RACK



Ref. No EXT Dimension (mm)
STF14037 1200x962x1304

STEEL AND WOOD VEGETABLE RACK



Ref. No EXT Dimension (mm)
STF14038 1949x974x1304

Vegetables and Fruits Area

- Bottom part made of iron square tube
- Multi-layer board
- 1 to 3 tiers are available except STF14041

STEEL AND WOOD VEGETABLE RACK



Ref. No EXT Dimension (mm)
STF14039 1240x700x1900

STEEL AND WOOD VEGETABLE RACK



Ref. No EXT Dimension (mm)
STF14040 1240x1360x1900

STEEL AND WOOD VEGETABLE RACK



Ref. No EXT Dimension (mm)
STF14041 820x820x760

Vegetables and Fruits Area

- Bottom part made of iron square tube and cold rolled plate, thickness of 1.0mm
- Surface is black and silver sprayed

STEEL AND WOOD VEGETABLE SHELVING



Ref. No EXT Dimension (mm)
STF14042 1200x800x2400

- Material: Stainless steel 304
- Size and colour can be customised

STEEL AND WOOD VEGETABLE RACK - PROMOTIONAL UNIT



Ref. No EXT Dimension (mm)
STF14043 Customisable

Vegetables and Fruits Area

- Steel-plastic combination
- Bottom cabinet with flip door panels in steel-wood combination
- Structure in iron tubes, table frame composed of extrusion and injection moulding parts, with a decorative strip in the middle
- Adjustable feet

STEEL AND PLASTIC VEGETABLE RACK - SQUARE UNIT



Ref. No	EXT Dimension (mm)
STF14044	800x800x800

- Steel-plastic combination
- Bottom cabinet with flip door panels in steel-wood combination
- Adjustable single-layer structure, table frame in stainless steel
- Adjustable feet
- Matching price rods

STEEL AND PLASTIC VEGETABLE RACK



Ref. No	EXT Dimension (mm)
STF14045	800x700x850
STF14046	1200x700x850
STF14047	1400x700x850

Vegetables and Fruits Area

- Steel-plastic combination
- Bottom cabinet with flip door panels in steel-wood combination
- Structure with iron tubes, table frame composed of extrusion and injection molding accessories
- Adjustable feet
- Matching price rod

STEEL AND PLASTIC VEGETABLE ISLAND DISPLAY



Ref. No	EXT Dimension (mm)
STF14048	996x680x780
STF14049	1400x700x780

- Stainless steel countertop
- 14-15mm multi-layer board

SCALE COUNTER



Ref. No	EXT Dimension (mm)
STF14050	600x800

Vegetables and Fruits Area

- Quartz stone countertop
- 14-15mm multi-layer board
- Stainless steel feet

SCALE COUNTER



Ref. No	EXT Dimension (mm)
STF14051	900x800

Bakery Area

- Size can be customised

BREAD COUNTER



Type	Ref. No	EXT Dimension (mm)
	STF14100	Customisable
Check out counter	STF14101	Customisable

BREAD COUNTER



Type	Ref. No	EXT Dimension (mm)
	STF14102	Customisable
Check out counter	STF14103	Customisable

BREAD COUNTER



Ref. No	EXT Dimension (mm)
STF14112	Customisable

Bakery Area

- Size can be customised

BREAD COUNTER



Ref. No EXT Dimension (mm)
STF14124 Customisable

ISLAND BREAD COUNTER



Ref. No EXT Dimension (mm)
STF14118 Customisable

ISLAND BREAD COUNTER



Ref. No EXT Dimension (mm)
STF14127 Customisable

Bakery Area

- Size can be customised

BREAD COUNTER



Ref. No EXT Dimension (mm)
STF14109 Customisable

BREAD COUNTER



Ref. No EXT Dimension (mm)
STF14110 Customisable

BREAD COUNTER



Ref. No EXT Dimension (mm)
STF14115 Customisable

Bakery Area

- Size can be customised

BREAD COUNTER



Ref. No EXT Dimension (mm)
STF14116 Customisable

ISLAND BREAD COUNTER



Ref. No EXT Dimension (mm)
STF14117 Customisable

BREAD COUNTER



Ref. No EXT Dimension (mm)
STF14111 Customisable

Bakery Area

- Size can be customised

ISLAND BREAD COUNTER



Ref. No EXT Dimension (mm)
STF14129 Customisable

ISLAND BREAD COUNTER



Ref. No EXT Dimension (mm)
STF14133 Customisable

ISLAND BREAD COUNTER



Ref. No EXT Dimension (mm)
STF14131 Customisable

Bakery Area

- Size can be customised

ISLAND BREAD COUNTER



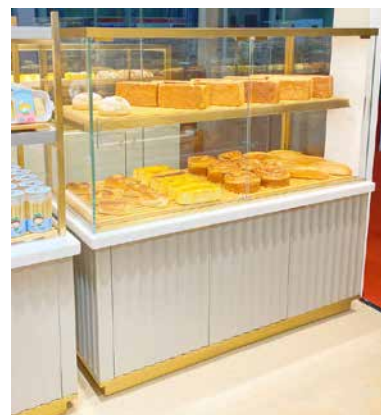
Ref. No EXT Dimension (mm)
STF14132 Customisable

ISLAND BREAD COUNTER



Ref. No EXT Dimension (mm)
STF14130 Customisable

ISLAND BREAD COUNTER



Ref. No EXT Dimension (mm)
STF14135 Customisable

Bakery Area

- Size can be customised

ISLAND BREAD COUNTER



Ref. No EXT Dimension (mm)
STF14134 Customisable

ISLAND BREAD COUNTER



Ref. No EXT Dimension (mm)
STF14136 Customisable

ISLAND BREAD COUNTER



Ref. No EXT Dimension (mm)
STF14137 Customisable

Bakery Area

- Size can be customised

ISLAND BREAD COUNTER



Ref. No	EXT Dimension (mm)
STF14122	Customisable

ISLAND BREAD COUNTER



Ref. No	EXT Dimension (mm)
STF14123	Customisable

BREAD COUNTER



Type	Ref. No	EXT Dimension (mm)
Middle island	STF14113	Customisable
	STF14114	Customisable

Bakery Area

- Size can be customised

ISLAND BREAD COUNTER



Ref. No	EXT Dimension (mm)
STF14119	Customisable

- Material: 1.0mm cold rolled steel and 14-15mm multi layer board
- Marble countertop
- 2 tiers display, equipped with closed glass
- Large storage cabinet with 2 doors

ISLAND BREAD COUNTER



Ref. No	EXT Dimension (mm)
STF14140	1200x1200x1350

WALL BREAD COUNTER



Ref. No	EXT Dimension (mm)
STF14141	1200x600x1350

Bakery Area

- Material: 1.0mm cold rolled steel and 14-15mm multi layer board
- Cabinet at bottom
- Double-layer structure upper part with LED warm light source
- Glass sliding doors

WALL BREAD COUNTER



Ref. No	EXT Dimension (mm)
STF14142	1500x1100x1400

ISLAND BREAD COUNTER



Ref. No	EXT Dimension (mm)
STF14143	1500x1100x1400

- Iron part made of 14-15mm multi layer board and cold-rolled plate, thickness of 1.0mm
- Surface is black and silver sprayed
- Including bottom panel, 3 tiers
- Base cabinet with double doors with ad board

SINGLE-SIDED BREAD RACK

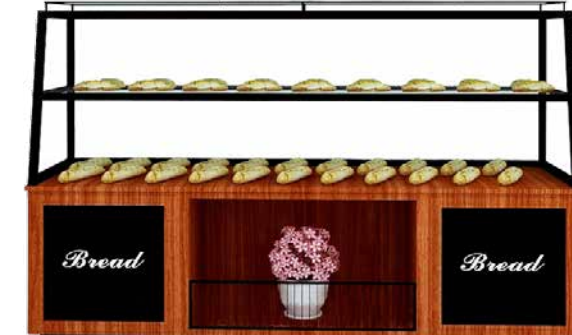


Type	Ref. No	EXT Dimension (mm)
	STF14138	600x2200
Top added board	STF14139	/

Bakery Area

- Material: 1.0mm cold rolled steel and 14-15mm multi-layer board
- Large storage capacity
- 2 tiers of glass shelves
- Wooden fence base
- Boutique ad board

ISLAND BREAD COUNTER



Ref. No	EXT Dimension (mm)
STF14144	1200x550x1350

- Material: 1.0mm cold rolled steel and 14-15mm multi-layer board
- Large storage capacity
- Surrounding glass with 2 sliding doors
- Wooden fence base
- Boutique ad board

ISLAND BREAD COUNTER



Ref. No	EXT Dimension (mm)
STF14145	1200x1200x1450

Bakery Area

- Size can be customised

ISLAND BREAD COUNTER



Ref. No EXT Dimension (mm)
STF14126 Customisable

ISLAND BREAD COUNTER



Ref. No EXT Dimension (mm)
STF14128 Customisable

ISLAND BREAD COUNTER



Ref. No EXT Dimension (mm)
STF14125 Customisable

Bakery Area

- Size can be customised

ISLAND BREAD COUNTER



Ref. No EXT Dimension (mm)
STF14120 Customisable

ISLAND BREAD COUNTER



Ref. No EXT Dimension (mm)
STF14121 Customisable

ISLAND BREAD COUNTER



Ref. No EXT Dimension (mm)
STF14104 Customisable

Bakery Area

- Size can be customised

BREAD COUNTER



Ref. No	EXT Dimension (mm)
STF14108	Customisable

BREAD COUNTER



Ref. No	EXT Dimension (mm)
STF14105	Customisable

BREAD COUNTER



Type	Ref. No	EXT Dimension (mm)
Warming cabinet	STF14106	Customisable
	STF14107	Customisable

Fish Counters

- Main steel structure in SUS 316L with thickness of 1.2mm and 50mm square pipe
- Support feet in SUS 316
- 8mm ultra-white glass body
- Polyurethane foam insulation

FISH COUNTER WITH GLASS



Ref. No	EXT Dimension (mm)
STF14200	2800x1000x1100

- Material: Stainless steel 304 or 316

FISH COUNTER WITH ROUND EDGES



Ref. No	EXT Dimension (mm)
STF14202	Custom Lx900

INCLINED FISH COUNTER



Ref. No	EXT Dimension (mm)
STF14212	Custom Lx900

Fish Counters

- Top in stainless steel 304 with thickness of 1.2mm, stainless steel 316 is an option
- Lower frame in stainless steel 202, 1.0mm thick and polyurethane foam island
- All steel welding with seamless polished look
- Rubber foot pad
- 1 water discharge below
- Includes nylon board

FISH COUNTER WITH ROUND EDGES



Ref. No	EXT Dimension (mm)
STF14201	1500x1500

STRAIGHT FISH COUNTER WITH INCLINED SLOPE



Ref. No	EXT Dimension (mm)
STF14203	1500x1500

Fish Counters

- Stainless steel 304 countertop
- Galvanised steel, plastic sprayed punching hoarding depending on model

FISH CORNER COUNTER



Type	Ref. No	Hoarding	EXT Dimension (mm)
Straight unit	STF14204	Galvanised steel	1600x900x800
	STF14205	PE 15mm	
Round unit	STF14206	Galvanised steel	900x900x800
	STF14207	PE 15mm	

STRAIGHT FISH COUNTER WITH FLAT TOP



Ref. No	Hoarding	EXT Dimension (mm)
STF14208	Galvanised steel	1600x800x800
STF14209	PE 15mm	

INCLINED FISH COUNTER



Ref. No	Hoarding	EXT Dimension (mm)
STF14210	Galvanised steel	1600x800x900

Fish Counters

- Titanium-plated stainless steel 304 with decorated holes
- 3 glass sides
- All-steel welding with seamless polished look
- Heat insulation layer in the middle of the countertop

FISH COUNTER



Ref. No	EXT Dimension (mm)
STF14211	1500x1000

- Material: Stainless steel 304 or 316
- Double stainless steel, middle foam insulation
- 20mm thick PE board

FISH COUNTER WITH FLAT TOP



Ref. No	EXT Dimension (mm)
STF14213	1200x800x800

Fish Counters

- Material: Stainless steel 304
- With front panel in option

INCLINED FISH ISLAND DISPLAY



Ref. No	EXT Dimension (mm)
STF14214	1200x1000x800~1200

- Material: Stainless steel 304
- Optional front panel and promotional top
- Perforated table top with adjustable height and water collector
- 4 castor wheels including 2 lockable wheels

FRESH FISH TABLE

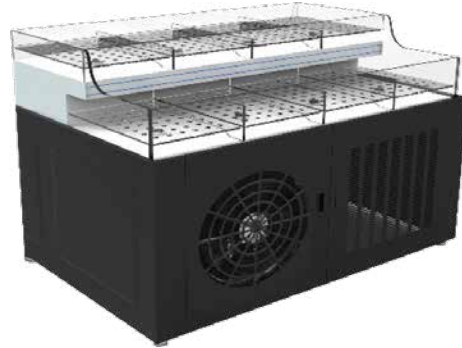


Ref. No	EXT Dimension (mm)
STF14215	800x800x850
STF14216	900x800x850
STF14217	1400x800x850

Fish Tanks

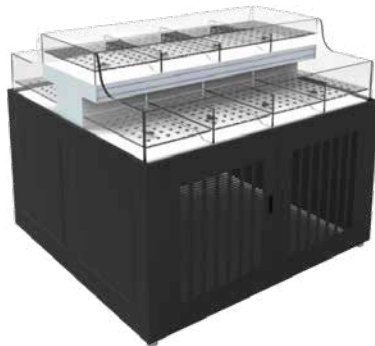
- Main steel structure in SUS 316L with thickness of 1.2mm and 50mm square pipe
- Digital controller
- Marble edging
- Support feet in SUS 316
- Enclosure in black titanium brushed anti-fingerprint stainless steel 316
- 12mm ultra-white glass body
- Imported LED blue and white light
- PVC large flow integrated nitrogen filter box

SHELLFISH POOL



Ref. No	EXT Dimension (mm)	Refrigeration (HP)	Oxygen Pump (W)
STF14300	1500x1100x1050	1.5	60

DOUBLE SIDE SHELLFISH POOL



Ref. No	EXT Dimension (mm)	Refrigeration (HP)	Oxygen Pump (W)
STF14301	1500x1100x1050	2	60

- Main steel structure in SUS 316L with thickness of 1.2mm and 50mm square pipe
- Support feet in SUS316
- 12mm ultra-white glass body

6-POOL TANK



Ref. No	EXT Dimension (mm)
STF14302	1500x1100x1050

Fish Tanks

- Main steel structure in SUS 316L with thickness of 1.2mm and 50mm square pipe
- Support feet in SUS 316
- Tray in SUS 304 with thickness of 0.7mm is not included

SHELL / PRAWN COUNTER



Ref. No	EXT Dimension (mm)
STF14303	1500x900x800

- Main steel structure in SUS 316L with thickness of 1.2mm and 50mm square pipe
- Digital controller
- Support feet in SUS 316
- Enclosure in black titanium brushed anti-fingerprint stainless steel 316
- 12mm ultra-white glass body
- Imported LED blue and white light
- PVC large flow integrated nitrogen filter box

SHRIMP TANK



Ref. No	EXT Dimension (mm)	Refrigeration (HP)	Oxygen Pump (W)
STF14308	2000x1100x1050	2	60

Fish Tanks

- Main steel structure in SUS 316L with thickness of 1.2mm and 50mm square pipe
- Digital controller
- Marble edging
- Support feet in SUS 316
- Enclosure in black titanium brushed anti-fingerprint stainless steel 316
- 12mm ultra-white glass body
- Imported LED blue and white light
- PVC large flow integrated nitrogen filter box

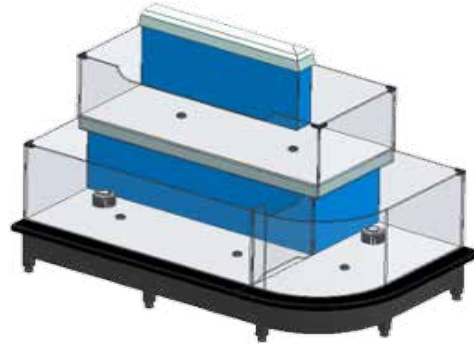
TIERED SEAFOOD POOL



STF14304

Type	Ref. No	EXT Dimension (mm)	Refrigeration (HP)	Oxygen Pump (W)
3-tier	STF14304	1600x1300x1550	1.5	60
2-tier	STF14305	1600x1220x1300	2	60

2-TIERED FISH TANK



Ref. No	EXT Dimension (mm)	Refrigeration (HP)	Oxygen Pump (W)
STF14306	1600x1220x1300	2	60

Fish Tanks

- Main steel structure in SUS 316L with thickness of 1.2mm and 50mm square pipe
- Digital controller
- Support feet in SUS 316
- Enclosure in black titanium brushed anti-fingerprint stainless steel 316
- 12mm ultra-white glass body
- Imported LED blue and white light
- PVC large flow integrated nitrogen filter box

SEAFOOD TANK



Ref. No	EXT Dimension (mm)	Refrigeration (HP)	Oxygen Pump (W)
STF14307	1400x1400x1050	2	60

SEAFOOD TANK



Type	Ref. No	EXT Dimension (mm)	Refrigeration (HP)	Oxygen Pump (W)
Single system	STF14309	2000x1100x1050	2	60
Dual system	STF14310	2000x1100x1050	2	60



FRESH LABORATORIES EQUIPMENT

Preparation tables p.50
 Cutting tables p.53
 Sink units p.58
 Handwash basins p.60
 Cabinets p.65
 Stainless steel trolleys p.67
 Bins p.72
 Exhaust hoods p.73

Stainless steel shelving p.74
 Wall shelves p.75
 Ice trolleys p.76
 Insulated pan carriers p.76
 Insulated drink servers p.78
 Dish caddies p.78
 Mobile plate racks p.79

Preparation Tables

- Material: Stainless steel 304
- Smart knock down system
- Height: 850mm
- Without backsplash

CENTRAL TABLE HEIGHT 850 WITHOUT BACKSPLASH



Depth (mm)	Length (mm)	Ref. No	
		Without undershelf	With undershelf
600	800	STF13001	STF13043
	1000	STF13002	STF13044
	1200	STF13003	STF13045
	1400	STF13004	STF13046
	1600	STF13005	STF13047
	1800	STF13006	STF13048
	2000	STF13007	STF13049
700	800	STF13008	STF13050
	1000	STF13009	STF13051
	1200	STF13010	STF13052
	1400	STF13011	STF13053
	1600	STF13012	STF13054
	1800	STF13013	STF13055
	2000	STF13014	STF13056
800	800	STF13015	STF13057
	1000	STF13016	STF13058
	1200	STF13017	STF13059
	1400	STF13018	STF13060
	1600	STF13019	STF13061
	1800	STF13020	STF13062
	2000	STF13021	STF13063

- Material: Stainless steel 304
- Smart knock down system
- Height: 850mm + 100mm
- With backsplash

TABLE HEIGHT 850 WITH BACKSPLASH



Depth (mm)	Length (mm)	Ref. No	
		Without undershelf	With undershelf
600	800	STF13022	STF13064
	1000	STF13023	STF13065
	1200	STF13024	STF13066
	1400	STF13025	STF13067
	1600	STF13026	STF13068
	1800	STF13027	STF13069
	2000	STF13028	STF13070
700	800	STF13029	STF13071
	1000	STF13030	STF13072
	1200	STF13031	STF13073
	1400	STF13032	STF13074
	1600	STF13033	STF13075
	1800	STF13034	STF13076
	2000	STF13035	STF13077
800	800	STF13036	STF13078
	1000	STF13037	STF13079
	1200	STF13038	STF13080
	1400	STF13039	STF13081
	1600	STF13040	STF13082
	1800	STF13041	STF13083
	2000	STF13042	STF13084

Preparation Tables

- Material: Stainless steel 304
- Removable upper-shelf for table
- Height: 500mm for 1 level, 750mm for 2 levels
- With anti-rolling bars

UPPER SHELF FOR PREPARATION TABLE



Depth (mm)	Length (mm)	Ref. No	
		1 level	2 levels
700	800	STF13085	STF13093
	1000	STF13086	STF13094
	1200	STF13087	STF13095
	1400	STF13088	STF13096
	1600	STF13090	STF13097
	1800	STF13091	STF13098
	2000	STF13092	STF13099

- Material: Stainless steel 304

DRAWER



Ref. No	EXT Dimension (mm)
STF13099	600
STF13100	700
STF13101	800

KNIFE HOLDER



Ref. No
STF13102

Preparation Tables

- Material: Stainless steel 304
- Depth: 240mm

DOUGH CARRYING TABLE



Ref. No	EXT Dimension (mm)
STF13103	1500x700x800

- Material: Stainless steel 304
- Welded structure
- 38x38mm tubular stand
- With 4 wheels, 2 with brakes

MOBILE TABLE



Type	Ref. No
1 level	STF13104
2 levels	STF13105

- Material: Stainless steel 304
- Welded structure, GN1/1 not included
- 38x38mm legs
- With 4 wheels, 2 with brakes

FOOD PAN TABLE



Ref. No	EXT. Dimension (mm)
STF13106	1200x800x850

Cutting Tables

- Material: Stainless steel 304
- Welded type with 30mm thick poly top
- Omega with side and corner reinforcements
- Adjustable height: 800-900mm
- Maximum supporting weight: 200kg
- Can be with or without backslash

MEAT / FISH CUTTING TABLE HEIGHT 800-900



Depth (mm)	Length (mm)	Ref. No	
		Without backslash	With backslash
600	1000	STF13107	STF13125
	1200	STF13108	STF13126
	1400	STF13109	STF13127
	1600	STF13110	STF13128
	1800	STF13111	STF13129
	2000	STF13112	STF13130
700	1000	STF13113	STF13131
	1200	STF13114	STF13132
	1400	STF13115	STF13133
	1600	STF13116	STF13134
	1800	STF13117	STF13135
	2000	STF13118	STF13136
800	1000	STF13119	STF13137
	1200	STF13120	STF13138
	1400	STF13121	STF13139
	1600	STF13122	STF13140
	1800	STF13123	STF13141
	2000	STF13124	STF13142

- Material: Stainless steel 304
- Welded type with 30mm thick poly top
- Omega with side and corner reinforcements
- Height: 850mm
- Maximum supporting weight: 250kg
- Can be with or without backslash

HEAVY DUTY CUTTING TABLE HEIGHT 850



Ref. No	EXT Dimension (mm)
STF13143	1200x700x850
STF13144	1400x800x850
STF13145	1500x1000x850

Cutting Tables

- Material: Stainless steel 304
- Large square legs with reinforcements

HEAVY DUTY CUTTING TABLE HEIGHT 850



Ref. No	EXT Dimension (mm)
STF13146	1800x900x850

- Material: Stainless steel 304
- PE board size: 590x590x150mm
- Legs welded with reinforcements
- Comes in red or white colour

HEAVY DUTY POLY BUTCHER - ISLAND TYPE



Ref. No	EXT Dimension (mm)
STF13147	600x600x800

HEAVY DUTY POLY BUTCHER - 1 SIDE OPEN TYPE



Ref. No	EXT Dimension (mm)
STF13150	600x600x800

Cutting Tables

- Material: Stainless steel 304
- Comes with bag holder and knife dispenser
- Welded structure with 30mm thick poly top
- 35x35mm stainless steel square feet
- Maximum weight: 200kg

STAINLESS STEEL POLY BUTCHER TABLE



Ref. No	EXT Dimension (mm)
STF13148	500x500x850+100
STF13149	600x600x850+100

- Material: Stainless steel 304
- Evacuation hole with collective drawer
- 20mm white poly top on one side and perforated board on the other side

MEAT UNPACKING TABLE



Ref. No	EXT Dimension (mm)
STF13151	600x600x800

- Material: Stainless steel 304
- Hole at the top
- Welded construction with white poly board on side

CHICKEN STICK TABLE ON WHEELS



Ref. No	EXT Dimension (mm)
STF13152	1200x700x850

Cutting Tables

- Material: Stainless steel 304
- With backsplash and marine edge
- White poly board 1000x500mm on one side and fish waste hole on the other side

FISH CUTTING TABLE WITH WASTE HOLE



Ref. No	EXT Dimension (mm)
STF13153	1800x800x850+100

- Material: Stainless steel 304
- With full size PE board and high backsplash
- Waste hole for fish scaling
- With removable waste recuperation container

FISH PREPARATION TABLE WITH ROUND TANK



Ref. No	EXT Dimension (mm)
STF13154	1000x600x850
STF13155	1400x600x850
STF13156	1900x600x850

FISH PREPARATION TABLE



Ref. No	EXT Dimension (mm)
STF13161	1800x900x850

Cutting Tables

- Material: Stainless steel 304
- 200mm backsplash and glass backsplash
- 30mm white poly board with 150mm waste hole
- Comes with sink
- Knife holder is optional

FISH PREPARATION TABLE WITH SINK



Ref. No	EXT Dimension (mm)
STF13157	1200X600X850

- Main steel structure in SUS 316L with thickness of 1.2mm and 50mm square pipe
- Enclosure in baked black paint
- Support feet in SUS 316
- 12mm ultra-white glass body
- 30mm PE cutting board
- Pre-rinse unit comes separately

FISH CUTTING STATION



Type	Ref. No	EXT Dimension (mm)
	STF13158	1200x700x1350
	STF13159	1400x700x1350
Pre-rinse unit	STF13160	

Sink Units

- Material: Stainless steel 304
- With faucet and lever drainer
- With backsplash and undershelf

PREMIUM SINK UNIT



Type	Ref. No	Sink Size (mm)	EXT Dimension (mm)
Single sink	STF13162	450x450x280	700x700x850+100
	STF13167	500x500x300	700x700x850+100
Double sink	STF13172	450x450x280	1200x700x850+100
	STF13173	450x450x280	1400x700x850+100
	STF13174	450x450x280	1600x700x850+100
	STF13175	450x450x280	1800x700x850+100
	STF13176	450x450x280	2000x700x850+100
	STF13177	450x450x280	2400x700x850+100
	STF13178	500x500x300	1200x600x850+100
	STF13179	500x500x300	1200x700x850+100
	STF13180	500x500x300	1400x700x850+100
	STF13181	500x500x300	1600x700x850+100
	STF13182	500x500x300	1800x700x850+100
STF13183	500x500x300	2000x700x850+100	
STF13184	500x500x300	2400x700x850+100	

PREMIUM SINGLE SINK UNIT



Ref. No	Sink Size (mm)	EXT Dimension (mm)
STF13163	450x450x280	1000x700x850+100
STF13164	450x450x280	1200x700x850+100
STF13165	450x450x280	1400x700x850+100
STF13166	450x450x280	1600x700x850+100
STF13168	500x500x300	1000x700x850+100
STF13169	500x500x300	1200x700x850+100
STF13170	500x500x300	1400x700x850+100
STF13171	500x500x300	1600x700x850+100

Sink Units

- Material: Stainless steel 304

SINGLE BOWL SINK WITH BIN DISPENSER



Ref. No	Sink Size (mm)	EXT Dimension (mm)
STF13185	450x450x280	1500x760x850

LARGE BOWL SINK



Ref. No	Sink Size (mm)	EXT Dimension (mm)
STF13186	1000x450x280	1200x700x850

- With back splash mounted faucet

ECO DOUBLE BOWL SINK WITH DRAIN BOARD



Ref. No	Sink Size (mm)	EXT Dimension (mm)
STF13187	600x500x400	1900x700x900

Sink Units

- 30mm poly board

FISH SINK PLATFORM WITH HDPE CUTTING BOARD



Ref. No	Sink Size (mm)	EXT Dimension (mm)
STF13188	450x450x280	1800x760x850

Handwash Basins

- Material: Stainless steel 304
- Operation: Knee press
- With faucet

HANDWASH BASIN - KNEE OPERATED



Type	Ref. No	EXT Dimension (mm)
Single	STF13189	400x400x275
	STF13190	455x455x275
Double	STF13201	800x400x275

HANDWASH BASIN WITH BACKSPLASH - KNEE OPERATED



Ref. No	EXT Dimension (mm)
STF13192	400x400x390

Handwash Basins

- Material: Stainless steel 304
- Operation: Knee press
- With faucet

HANDWASH BASIN WITH BACKSPLASH - KNEE OPERATED



Ref. No	EXT Dimension (mm)
STF13193	400x400x390

HANDWASH BASIN WITH HIGH BACKSPLASH - KNEE OPERATED



Ref. No	EXT Dimension (mm)
STF13194	400x340x570

HANDWASH BASIN - KNEE OPERATED



Ref. No	EXT Dimension (mm)
STF13195	455x455x275

Handwash Basins

- Material: Stainless steel 304
- Operation: Knee press
- With faucet

HANDWASH BASIN - KNEE OPERATED



Ref. No	EXT Dimension (mm)
STF13196	400x340x235

HANDWASH BASIN - KNEE OPERATED



Ref. No	EXT Dimension (mm)
STF13197	400x400x250

HANDWASH BASIN - KNEE OPERATED



Ref. No	EXT Dimension (mm)
STF13199	480x350x235

Handwash Basins

- Material: Stainless steel 304
- Operation: Knee press
- With faucet

HANDWASH BASIN - KNEE OPERATED



Ref. No	EXT Dimension (mm)
STF13200	500x400x600

- Material: Stainless steel 304
- Operation: Manual
- Faucet included only for STF13198

HANDWASH BASIN - MANUALLY OPERATED



Ref. No	EXT Dimension (mm)
STF13191	400x400x240

HANDWASH BASIN - MANUALLY OPERATED



Ref. No	EXT Dimension (mm)
STF13198	400x400x320

Handwash Basins

- Heavy duty structure
- Operation: Automatic

AUTOMATIC HANDWASH BASIN



Ref. No	EXT Dimension (mm)
STF13206	400x400x600

- Welded structure
- Stamped sink with faucet
- Operation: Foot control
- Backsplash: 400mm

HANDWASH BASIN ON STAND



Ref. No	EXT Dimension (mm)
STF13207	485x400x800

Cabinets

- Material: Stainless steel 304
- Tabletop with omega
- Double wall welded structure
- Inner middle shelf and shelf height is adjustable
- Door lock in options

SLIDING DOOR CABINET WITH BACKSPLASH



Ref. No	EXT Dimension (mm)
STF13208	1200x700x850+100
STF13209	1400x700x850+100
STF13210	1600x700x850+100
STF13211	1800x700x850+100

SLIDING DOOR CABINET



Ref. No	EXT Dimension (mm)
STF13212	1200x700x850
STF13213	1400x700x850
STF13214	1600x700x850
STF13215	1800x700x850

- Sliding door with lock

WALL CABINET



Ref. No	EXT Dimension (mm)
STF13216	1100x400x600
STF13217	2300x350x600

Cabinets

BEVERAGE CABINET



STF13219



STF13218

Ref. No	EXT Dimension (mm)
STF13218	1500x760x790
STF13219	1200x760x790

HIGH CABINET WITH SLIDING DOORS



Height (mm)	Depth (mm)	Length (mm)	Ref. No
2000	600	1000	STF13220
		1200	STF13221
		1400	STF13222
		1600	STF13223
		1800	STF13224
2000	700	2000	STF13225
		1000	STF13226
		1200	STF13227
		1400	STF13228
		1600	STF13229
		1800	STF13230
		2000	STF13231

STORAGE CABINET



Type	Ref. No	EXT Dimension (mm)	No. of Shelves
1 swinging door	STF13232	600x600x2000	3
2 swinging doors	STF13233	1000x600x2000	3

Stainless Steel Trolleys

- Material: Stainless steel
- Heavy duty structure
- For 400x600mm pans or GN pans
- With 4 wheels, 2 wheels with brake

STAINLESS STEEL TROLLEY



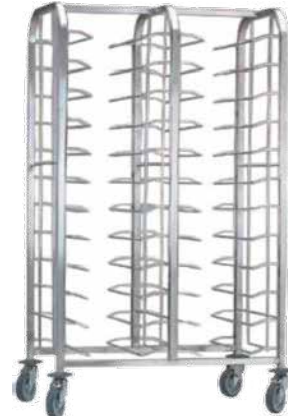
Type	No. of Levels	Ref. No
	10	STF13234
Pan entrance 400mm	15	STF13235
	20	STF13236
	10	STF13237
Pan entrance 600mm	15	STF13238
	20	STF13239
	10	STF13240
GN1/1 entrance 325	15	STF13241
	20	STF13242
	10	STF13243
GN2/1 entrance 530	15	STF13244
	20	STF13245

- Knock down system or welded

CONTAINER TROLLEY



STF13246



STF13247

No. of Levels	Ref. No	EXT Dimension (mm)
8	STF13246	610x410x1800
24	STF13247	610x910x1800

Stainless Steel Trolleys

- Material: Stainless steel 304
- With 4 wheels, 2 wheels with brake

PREMIUM SERVING TROLLEY



No. of Levels	Ref. No	EXT Dimension (mm)
2	STF13248	760x380x760
	STF13249	860x540x940
	STF13250	810x460x850
3	STF13251	760x380x760
	STF13252	860x540x940
	STF13253	810x460x850

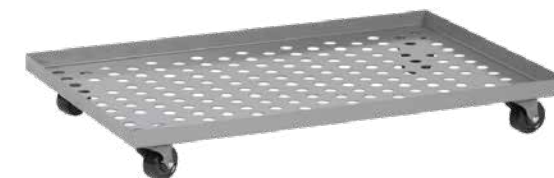
PLATE CARRYING TROLLEY



Ref. No	EXT Dimension (mm)
STF13254	910x366x761
STF13255	910x613x742

- Material: Stainless steel 304, 1.2mm thick
- With 4 universal wheels
- Fit for 500x500mm or 600x400mm basket

CARRYING TROLLEY



Ref. No	EXT Dimension (mm)
STF13273	515x515x166
STF13274	616x416x166

Stainless Steel Trolleys

- Material: Stainless steel
- With 2 wire baskets
- With 4 wheels, 2 wheels with brake

TRAY FILLING TROLLEY



Ref. No	EXT Dimension (mm)
STF13275	1200x700x850

TROLLEY FOR CUT-UP MEAT



Ref. No	EXT Dimension (mm)
STF13257	1000x600x1800
STF13258	1200x600x1800
STF13259	1400x600x1800
STF13260	1600x600x1800
STF13261	1900x600x1800
STF13262	1000x700x1800
STF13263	1200x700x1800
STF13264	1400x700x1800
STF13265	1600x700x1800
STF13266	1900x700x1800

Stainless Steel Trolleys

- Loading capacity: Up to 500kg
- With 6 heavy duty wheels

TROLLEY FOR CUT-UP MEAT



Ref. No	EXT Dimension (mm)
STF13256	1400x700x1800

- Can be 4 or 5 levels
- With a recuperation tray

CHICKEN CAGE TROLLEY



Ref. No	EXT Dimension (mm)
STF13267	500x1100x1800
STF13268	750x1100x1800

Stainless Steel Trolleys

- Material: Stainless steel 430

POWDER WRAP



Ref. No	EXT Dimension (mm)
STF13269	800x700x1200

- Top with removable perforated plate
- With GN1/1 pan collector

TROLLEY FOR UNPACKING MEAT



Ref. No	EXT Dimension (mm)
STF13270	900x600x1000

- Has 2 side handles and lid
- With 4 swivelling wheels, 2 wheels with brake

MARINATED CHICKEN TROLLEY



Ref. No	EXT Dimension (mm)
STF13271	600x600x650

Stainless Steel Trolleys

- Capacity: 130L
- With 4 wheels, 2 wheels with brake

MARINATED CHICKEN TROLLEY



Ref. No	EXT Dimension (mm)
STF13272	395x610x730

Bins

- Material: Stainless steel 201, 0.6mm thick
- Capacity: 110L per bag
- Feet operated
- With 2 small wheels for transportation

RUBBISH HOLDER



Ref. No	EXT Dimension (mm)
STF13276	525x430x900

- Material: Stainless steel
- Capacity: 100L
- With removable lid
- With 3 lockable wheels

STAINLESS STEEL UNDERCOUNTER BIN



Ref. No	EXT Dimension (mm)
STF13277	450

Bins

- Material: PP and PC
- With spoon storage under lid
- 2 lid on each side with handle for transportation
- Comes in white

PLASTIC INGREDIENT BIN



Ref. No	EXT Dimension (mm)
STF13278	743x333x711
STF13279	749x394x711

Exhaust Hoods

- Material: Stainless steel 304
- With filter and light

EXHAUST HOOD



Ref. No	EXT Dimension (mm)
STF13281	1200x900x500
STF13282	1100x1100x500
STF13283	1500x1400x500
STF13284	3000x1000x500
STF13285	2000x1800x500
STF13286	3500x1000x500
STF13287	3500x1400x500
STF13288	2300x2000x500

Stainless Steel Shelving

- Material: Stainless steel 304
- Plain or with tube

STAINLESS STEEL SHELVES



Depth (mm)	Length (mm)	Ref. No
400	900	STF13289
	1100	STF13290
	1200	STF13291
	1300	STF13292
	1400	STF13293
	1500	STF13294
	1600	STF13295
500	1800	STF13296
	900	STF13297
	1100	STF13298
	1200	STF13299
	1300	STF13300
	1400	STF13301
	1500	STF13302
600	1600	STF13303
	1800	STF13304
	900	STF13305
	1100	STF13306
	1200	STF13307
	1300	STF13308
	1400	STF13309
700	1500	STF13310
	1600	STF13311
	1800	STF13312
	900	STF13313
	1100	STF13314
	1200	STF13315
	1300	STF13316
800	1400	STF13317
	1500	STF13318
	1600	STF13319
	1800	STF13320
	900	STF13321
	1100	STF13322
	1200	STF13323
1300	1300	STF13324
	1400	STF13325
	1500	STF13326
	1600	STF13327
	1800	STF13328

Stainless Steel Shelving

- Material: Stainless steel 304
- Omega with side profiles and bumpers
- With 4 wheels, 2 wheels with brake

PREMIUM STAINLESS STEEL SHELF



Ref. No	EXT Dimension (mm)
STF13329	1255x600x1750

Wall Shelves

- Material: Stainless steel
- Adjustable shelves

WALL SHELF



Ref. No	EXT Dimension (mm)
STF13330	1000x300x400
STF13331	1200x300x400
STF13332	1400x300x400
STF13333	1800x300x400
STF13334	1900x300x400

Ice Trolleys

- PE body with thick foam insulation
- Capacity: 110L
- With sliding lid and evacuation valve
- Weight capacity for ice: 57kg

INSULATED ICE TROLLEY



Ref. No	EXT Dimension (mm)
STF13400	585x800x745

Insulated Pan Carriers

- Material: PE with thick foam insulation
- With adjustable vent cap

TOP LOADING INSULATED GN CARRIER



Ref. No	EXT Dimension (mm)	Storage Capacity	
		Pan QTY	Height (mm)
STF13406	440x380x210	1xGN1/1	100
STF13407	770x390x380	2xGN1/2	200
STF13408	630x440x210	1xGN1/1	100
		2xGN1/2	
		3xGN1/3	
STF13409	630x440x260	1xGN1/1	150
		2xGN1/2	
		3xGN1/3	
STF13410	630x440x305	1xGN1/1	200
		2xGN1/2	
		3xGN1/3	

CART FOR INSULATED BOXES



Ref. No	EXT Dimension (mm)
STF13405	530x710x230

Insulated Pan Carriers

- Material: PE with thick foam insulation
- Has an adjustable vent cap

INSULATED GN CARRIER



Type	Ref. No	Dimension (mm)		Storage Capacity	
		EXT	Chamber	GN1/1 Pan	Height (mm)
Single	STF13401	477x680x620	335x533x490	2	200
				3	150
				4	100
Double with wheels	STF13403	477x680x1330		6	65

- Material: PE with thick foam insulation
- With digital thermometer
- Has an adjustable vent cap

ELECTRIC INSULATED GN CARRIER



Type	Ref. No	Dimension (mm)		Storage Capacity	
		EXT	Chamber	GN1/1 Pan	Height (mm)
Single	STF13402	477x680x620	335x533x490	2	200
				3	150
				4	100
				6	65
Double with wheels	STF13404	477x680x1330			

Insulated Drink Servers

- Material: PE
- Drip-proof recessed faucet

INSULATED DRINK SERVER



Ref. No	EXT Dimension (mm)
STF13418	420x230x420
STF13419	420x230x470
STF13420	420x230x620
STF13421	420x535x630
STF13422	425x300x500
STF13423	425x300x680
STF13424	470x310x510

Dish Caddies

- Material: PP
- Can hold 4.5"-13" plates
- With adjustable dividers

ADJUSTABLE DISH CADDY



Ref. No	EXT Dimension (mm)	Capacity		
		Max. Stacks	Total Pcs	No. of Dividers
STF13429	1090x720x800	8	400	6
STF13430	930x720x800	6	300	6
STF13431	900x725x800	4	200	4

Mobile Plate Racks

- Separating columns and rubber granules are made of soft copolymer resin
- 4" non-trace casters with brake are non-slip
- Can be adjusted to any size

MOBILE PLATE RACK



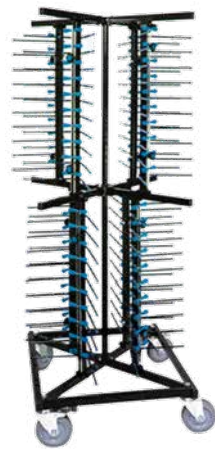
STF13425

Ref. No	EXT Dimension (mm)	No. of Plates
STF13425	730x730x1260	48
STF13426	730x730x1910	84

MOBILE PLATE RACK



STF13427



STF13428

Ref. No	EXT Dimension (mm)	No. of Plates
STF13427	575x575x1003	40
STF13428	575x575x1790	80



FRESH AREA ACCESSORIES

Plastic rattan baskets	p.81	ABS trays	p.97
Plastic crates	p.82	PC GN trays	p.98
Fruit and vegetable fences	p.85	PP non-slip trays	p.98
Fruit and vegetable stands	p.87	Fibreglass slip trays	p.99
Bag holders	p.91	Baking trays	p.100
Shelf dividers and rollers	p.92	Stainless steel grids	p.102
Stainless steel food pans	p.94		
PC food pans	p.96		

Plastic Rattan Baskets

- Embedded wire fixation

MULTI-FUNCTIONAL RATTAN BASKET



Type	Ref. No	EXT Dimension (mm)
Round shape	STF15001	450x500
	STF15002	600x500
	STF15003	750x500
	STF15004	900x500
Square shape	STF15005	450x500
	STF15006	600x500
	STF15007	750x500
	STF15008	900x500

SINGLE RATTAN BASKET



STF15009

STF15013

STF15014

Type	Ref. No	EXT Dimension (mm)
Rectangular shape	STF15009	400x300x100
	STF15010	450x300x100
	STF15011	600x400x100
	STF15012	600x450x100
Fan shape	STF15013	600x410x300x120
Round shape	STF15014	450x100

3 TIER RATTAN BASKET DISPLAY



Ref. No	EXT Dimension (mm)
STF15015	500x500x1100

Plastic Rattan Baskets

- Embedded wire fixation

9 LAYER PLASTIC RATTAN BASKET DISPLAY



Ref. No	EXT Dimension (mm)
STF15016	1200x900x1100

Plastic Crates

- Material: Recycled HDPP
- Different colours available
- Stackable
- Perforated type

FRUIT / VEGETABLE CRATE



STF15018

STF15020

Ref. No	EXT Dimension (mm)
STF15017	600x400x100
STF15018	600x400x150
STF15019	600x400x200
STF15020	600x400x300

FRUIT / VEGETABLE CRATE



Ref. No	EXT Dimension (mm)
STF15024	595x400x100

Plastic Crates

- Material: Recycled HDPP
- Different colours available
- Stackable for all model except STF15023
- Perforated type

FRUIT / VEGETABLE CRATE



Ref. No	EXT Dimension (mm)
STF15021	600x400x50

FRUIT / VEGETABLE CRATE



Ref. No	EXT Dimension (mm)
STF15022	600x400x105

FRUIT / VEGETABLE CRATE



Ref. No	EXT Dimension (mm)
STF15023	570x370x80

Plastic Crates

- Material: Recycled HDPP

FOLDABLE FRUIT / VEGETABLE CRATE



Folded view

Ref. No	EXT Dimension (mm)
STF15025	385x290x130

FOLDABLE FRUIT / VEGETABLE CRATE



STF15028

Ref. No	EXT Dimension (mm)
STF15026	580x387x95
STF15027	580x387x170
STF15028	580x387x210

FOLDABLE FRUIT / VEGETABLE CRATE



Folded view

Ref. No	EXT Dimension (mm)
STF15029	525x355x275

Fruit and Vegetable Fences

- Material: PP

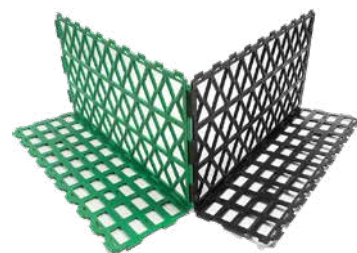
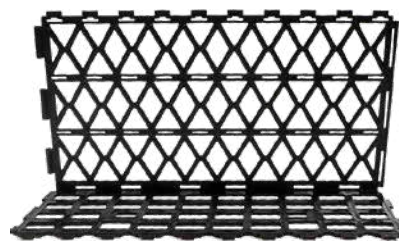
GRID FENCE



Interlocked view

Ref. No	EXT Dimension (mm)
STF15031	370x120x90

MULTI-FUNCTION FENCE



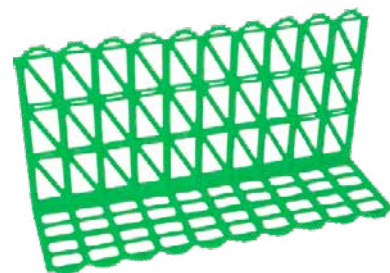
Interlocked view



An example of display

Ref. No	EXT Dimension (mm)
STF15032	380x200x120

CARD SLOT FENCE



Ref. No	EXT Dimension (mm)
STF15033	380x200x120

Fruit and Vegetable Fences

- Material: PP, ABS

PLASTIC FENCE PANELS



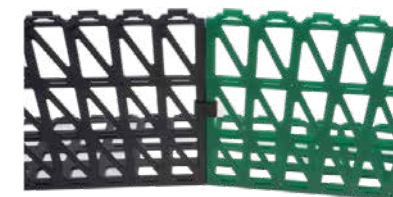
Interlocked view



Display view

Ref. No	EXT Dimension (mm)
STF15030	185x105x175

CARD SLOT FENCE



Ref. No	EXT Dimension (mm)
STF15034	380x200x120

- Material: Rubber with steel inside

- Can be used repeatedly

FENCE PROTECTION STRIP



View on fence

Ref. No	EXT Dimension (m)
STF15035	100

Fruit and Vegetable Stands

- Material: PVC

NON-SLIP MAT



Ref. No	EXT Dimension (mm)
STF15036	1200x1000
STF15037	1500x1000

DISPLAY DIVIDER



Divider for tray display view

Ref. No	EXT Dimension (mm)
STF15051	400x50x130

- Material: ABS

SERVING TRAY



Ref. No	EXT Dimension (mm)
STF15048	400X300X60
STF15049	800X300X60
STF15050	400X280X50

Fruit and Vegetable Stands

- Material: ABS

DISPLAY PANEL FOR AIR COOLER



Joint view

Ref. No	EXT Dimension (mm)
STF15038	300x300

DISPLAY RACK



Ref. No	EXT Dimension (mm)
STF15039	300x200x100

DISPLAY STAND



Display view

Type	Ref. No	EXT Dimension (m)
Shelf	STF15040	450x300
	STF15041	600x300
Legs	STF15042	50
	STF15043	100

Fruit and Vegetable Stands

- Material: PP

TIERED DISPLAY TABLE



STF15047



Display view

Type	Ref. No	EXT Dimension (mm)
2 tier	STF15045	300x360x250
3 tier	STF15046	300x540x350
4 tier	STF15047	300x720x420

- Material: ABS

3-TIER DOUBLE PURPOSE T-TABLE



Display view

Ref. No	EXT Dimension (mm)
STF15044-1	300X340X180
STF15044-2	300X400X150

DISPLAY BLOCK



Display view

Style	Ref. No	EXT Dimension (mm)
Square	STF15052-1	100x100x100
Triangle	STF15052-2	100x100x141

Fruit and Vegetable Stands

- Material: ABS

SLOT BOARD WITH BRACKET



Display view

Type	Ref. No	EXT Dimension (m)
Slot board	STF15053	600x600
	STF15054	600x750
	STF15055	600x900
	STF15056	600x1050
	STF15057	600x1200
Divider	STF15058	280x130x5
	STF15059	600x130x5
	STF15060	750x130x5

FRUIT STAND



Ref. No	EXT Dimension (mm)
STF15061	278x130x95

BANANA DISPLAY TRAY



Display view

Ref. No	EXT Dimension (mm)
STF15062	300x450x77

4 STEP DISPLAY RISER

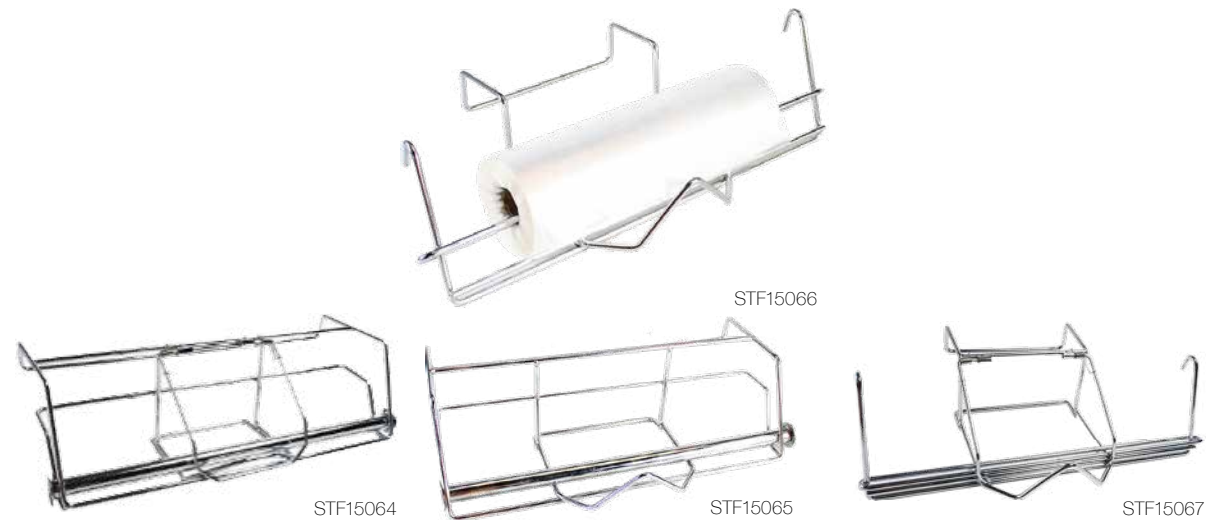


Ref. No	EXT Dimension (mm)
STF15063	300x900x77

Bag Holders

- Material: Stainless steel

ROLL BAG DISPENSER



Ref. No	EXT Dimension (mm)
STF15064	420x130
STF15065	420x130
STF15066	440x150
STF15067	440x150

ROLL BAG DISPENSER



Ref. No	EXT Dimension (mm)
STF15068	400x200

FLOOR TYPE ROLL BAG DISPENSER



Type	Ref. No	EXT Dimension (mm)
Double	STF15069	350x1100
	STF15070	350x500
Single	STF15071	350x500

Shelf Dividers and Rollers

- Aluminium alloy support
- Plastic base with stainless steel strip

AUTO FEED ROLLER RACK SHELF DISPLAY



Ref. No	EXT Dimension (mm)
STF15072	500x450

- Material: PC
- Self-pusher system

SHELF DIVIDER SELF PUSHER



Ref. No	EXT Dimension (mm)
STF15073	280

SHELF DIVIDER SHELF PUSHER

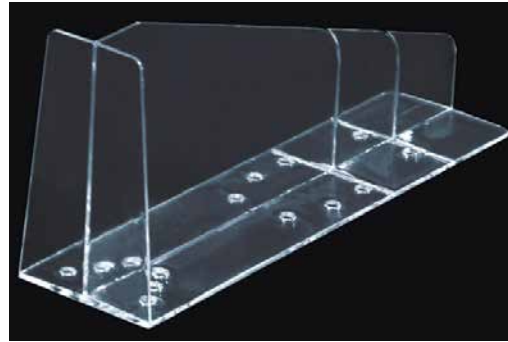


Ref. No	EXT Dimension (mm)
STF15074	286x65
STF15075	280x65
STF15076	240x65
STF15077	280x90

Shelf Dividers and Rollers

- Material: PC

SHELF PRODUCT DIVIDER

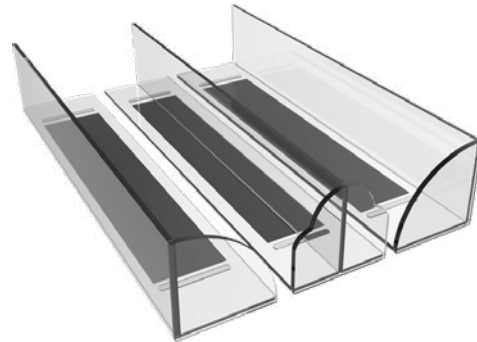


Display view

Ref. No	EXT Dimension (mm)
STF15078	290x76x126

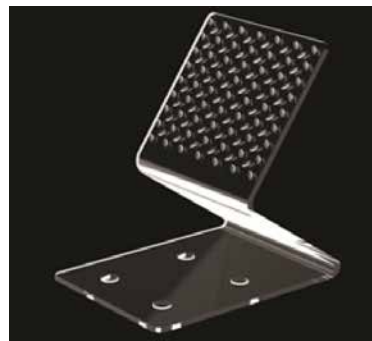
- Material: ABS

MAGNETIC SHELF DIVIDER



Ref. No	EXT Dimension (mm)
STF15079	220x40x40

REAR MAGNETIC SUCTION BRACKET



Display view

Ref. No	EXT Dimension (mm)
STF15080	95x70x120

Stainless Steel Food Pans

- Material: Stainless steel 304

STAINLESS STEEL FOOD PAN



Type	Ref. No	EXT Dimension (mm)
GN 2/1	STF15101	652x532x40
	STF15102	652x532x55
	STF15103	652x532x65
	STF15104	652x532x100
	STF15105	652x532x150
	STF15106	652x532x200
GN 1/1	STF15107	530x325x20
	STF15108	530x325x40
	STF15109	530x325x55
	STF15110	530x325x65
	STF15111	530x325x100
	STF15112	530x325x150
GN 2/3	STF15113	530x325x200
	STF15114	355x325x20
	STF15115	355x325x65
	STF15116	355x325x100
	STF15117	355x325x150
	STF15118	355x325x200
GN 1/2	STF15119	325x265x20
	STF15120	325x265x40
	STF15121	325x265x55
	STF15122	325x265x65
	STF15123	325x265x100
	STF15124	325x265x150
GN 1/3	STF15125	325x265x200
	STF15126	325x176x40
	STF15127	325x176x55
	STF15128	325x176x65
	STF15129	325x176x100
	STF15130	325x176x200
GN 1/6	STF15131	176x162x65
	STF15132	176x162x100
GN 2/4	STF15133	530x162x65
	STF15134	530x162x100
	STF15135	530x162x150

STAINLESS STEEL FOOD PAN LID



Style	Type	Ref. No
Standard	GN 1/1	STF15136
	GN 1/2	STF15137
	GN 2/3	STF15138
	GN 1/3	STF15139
	GN 1/6	STF15140
	GN 1/1	STF15141
With spoon cut-out	GN 1/2	STF15142

Stainless Steel Food Pans

- Material: Stainless steel 304

STAINLESS STEEL PERFORATED FOOD PAN



Style	Type	Ref. No	EXT Dimension (mm)
Full perforated	GN 1/1	STF15143	530x325x100
		STF15144	530x325x150
		STF15145	530x325x200
	GN 1/2	STF15146	325x265x100
		STF15147	325x265x150
		STF15148	355x325x150
Bottom perforated	GN 1/1	STF15149	530x325x65
	GN 1/2	STF15150	325x265x65
	GN 1/3	STF15151	325x176x65
	GN 2/1	STF15152	652x532x100

STAINLESS STEEL STRAINER



Type	Ref. No	EXT Dimension (mm)
GN 1/1	STF15153	530x325
GN 1/2	STF15154	325x265

PC Food Pans

- Material: Polycarbonate

PC FOOD PAN



Type	Ref. No	EXT Dimension (mm)
GN 1/1	STF15200	530x325x65
	STF15201	530x325x100
	STF15202	530x325x150
GN 1/2	STF15203	530x325x200
	STF15204	325x265x65
	STF15205	325x265x100
GN 1/3	STF15206	325x265x150
	STF15207	325x265x200
	STF15208	325x176x65
GN 1/3	STF15209	325x176x100
	STF15210	325x176x150
	STF15211	325x176x200
GN 1/4	STF15212	265x162x65
	STF15213	265x162x100
	STF15214	265x162x150
GN 1/6	STF15215	176x162x65
	STF15216	176x162x100
	STF15217	176x162x150
GN 1/9	STF15218	176x108x65
	STF15219	176x108x100

PC FOOD PAN LID



Style	Type	Ref. No	EXT Dimension (mm)
Standard	GN 1/1	STF15220	530x325
	GN 1/2	STF15221	325x265
	GN 1/3	STF15222	325x176
	GN 1/4	STF15223	265x162
	GN 1/6	STF15224	176x162
	GN 1/9	STF15225	176x108
With spoon cut-out	GN 1/1	STF15226	530x325
	GN 1/2	STF15227	325x265
	GN 1/3	STF15228	325x176
	GN 1/4	STF15229	265x162
	GN 1/6	STF15230	176x162

PC FOOD PAN STRAINER



Type	Ref. No	EXT Dimension (mm)
GN 1/1	STF15231	460x250x19
GN 1/2	STF15232	256x196x15
GN 1/3	STF15233	250x100x18.5
GN 1/4	STF15234	210x108x15
GN 1/6	STF15235	123x108x15

ABS Trays

- Material: ABS

13 PCS SET ABS TRAY



Ref. No	EXT Dimension (mm)
STF15302	800x800

9 PCS SET ABS TRAY



Ref. No	EXT Dimension (mm)
STF15303	800x800

ABS TRAY



STF15310

STF15309

Ref. No	EXT Dimension (mm)
STF15304	345x263
STF15305	415x300
STF15306	455x300
STF15307	455x355
STF15308	380x280
STF15309	425x300
STF15310	450x305

PC GN Trays

- Material: Polycarbonate
- Withstand temperatures from -40°C to 99°C

PC GN TRAY



Ref. No	EXT Dimension (mm)
STF15300	530x320
STF15301	320x260

PP Non-Slip Trays

- Material: Polypropylene

ROUND PP NON-SLIP TRAY



Ref. No	EXT Dimension (mm)
STF15311	Ø280x20
STF15312	Ø355x22
STF15313	Ø405x22

RECTANGULAR PP NON-SLIP TRAY



Ref. No	EXT Dimension (mm)
STF15314	354x255x22.5
STF15315	409x299x20
STF15316	457x355x22
STF15317	507x380x22
STF15318	558x405x22

Fiberglass Non-Slip Trays

- Material: Fiberglass
- Resistant to 120°C

ROUND FIBERGLASS NON-SLIP TRAY



Ref. No	EXT Dimension (mm)
STF15319	Ø280x20
STF15320	Ø355x22.5
STF15321	Ø405x22
STF15322	Ø460x22

RECTANGULAR FIBERGLASS NON-SLIP TRAY



Ref. No	EXT Dimension (mm)
STF15323	350x270
STF15324	415x305
STF15325	460x355
STF15326	515x380
STF15327	560x405
STF15328	650x450
STF15329	750x480

OVAL FIBERGLASS NON-SLIP TRAY



Ref. No	EXT Dimension (mm)
STF15330	590x490
STF15331	685x560
STF15332	735x600
STF15333	800x600

Baking Trays

- Material: Aluminium alloy with Teflon coating
- Thickness: 1.2mm

NON-STICK ALUMINIUM ALLOY SHEET PAN



Ref. No	EXT Dimension (mm)
STF15400	600x400x20

- Material: Aluminium alloy with anode coating
- Thickness: 1.5mm

ANODE ALUMINIUM ALLOY ROUND CORNER SHEET PAN



Ref. No	EXT Dimension (mm)
STF15401	600x400x20

- Material: Aluminium alloy with natural coating
- Thickness: 1.5mm

ALUMINIUM ALLOY SHEET PAN



Ref. No	EXT Dimension (mm)
STF15402	600x400x20

Baking Trays

- Material: Aluminium alloy
- Thickness: 1.0mm

3-STRAP NON-STICK LOAF PAN



Ref. No	Capacity (g)	EXT Dimension (mm)
STF15403	1000	600x353x139
STF15404	1200	596x397x143

- Material: Aluminium alloy with Teflon coating
- Thickness: 1.0mm

NON-STICK LOAF PAN

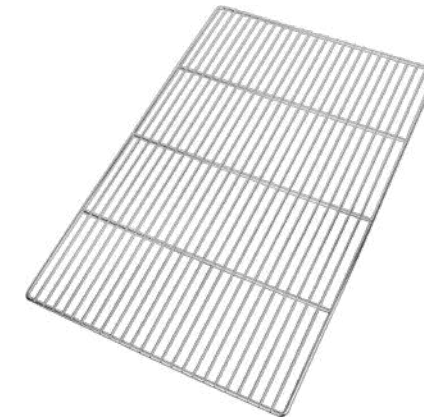


Ref. No	EXT Dimension (mm)
STF15405	309x91x107
STF15406	316x100x116
STF15407	252x129x121
STF15408	325x106x122
STF15409	327x121x121
STF15410	370x120x125
STF15411	450x128x130

Stainless Steel Grids

- Material: Stainless steel 201
- Electrolised finishing

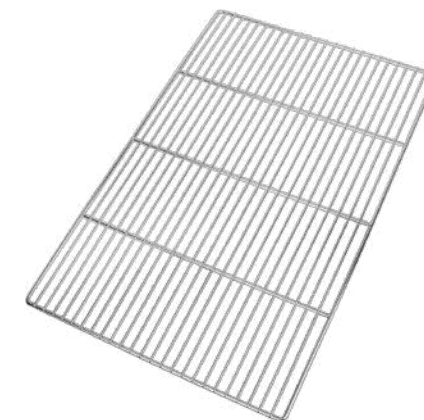
STAINLESS STEEL GRID



Ref. No	Wire		Crossbar		EXT Dimension (mm)
	Diameter (mm)	Count	Diameter (mm)	Count	
STF15412	2	29	5	3	400x600
STF15413	2	17	5	3	400x600
STF15414	2	20	5	2	530x325
STF15415	3	20	7	3	530x650
STF15416	2	30	5	3	530x650
STF15417	3	22	7	2	600x800

- Material: Steel
- Chromed finishing

STEEL CHROMED GRID



Ref. No	Wire		Crossbar		EXT Dimension (mm)
	Diameter (mm)	Count	Diameter (mm)	Count	
STF15418	2	29	5	3	400x600



DRY FOOD DISPLAYS AND GONDOLAS

Dry food displays p.104
 Grain displays p.113
 Grain dispensers p.115
 Gondolas p.121

Dry Food Displays

- Steel-wood structure with flat glass table
- Door opening at the bottom

DRY FOOD SHELVES



Ref. No EXT Dimension (mm)
 STF17001 1200x700x2400

DRY FOOD SHELVES



Ref. No EXT Dimension (mm)
 STF17002 1200x700x2400

DRY FOOD ISLAND RACK



Ref. No EXT Dimension (mm)
 STF17022 1200x700x1400

Dry Food Displays

- Steel-wood structure with acrylic boxes with lid
- Door opening at the bottom

DRY FOOD SHELVES



Ref. No	Acrylic Boxes	EXT Dimension (mm)
STF17003	3	1200x700x2400
STF17004	8	1200x700x2400

- Steel-wood storage
- With low bottom shelves for storage

DRY FOOD SHELVES



Ref. No	EXT Dimension (mm)
STF17005	1200x700x2400

- Wood stucture made of multi-layer board

DRY FOOD ISLAND RACK



Ref. No	EXT Dimension (mm)
STF17034	2400x1250

Dry Food Displays

- Iron structure is made of iron square tube with black scrub surface
- Wood made of multi-layer board
- 4 step display
- Size and colour can be customised

DRY FOOD ISLAND RACK



Ref. No	EXT Dimension (mm)
STF17029	1200x750x1520
STF17030	1500x750

- Main material is E1 grade melamine board with Q195 pipe welding frame with electrostatic sprayed surface
- Iron back frame with a layer of plate-stainless steel round bar enclosure
- Base table is made of 150 deep glass edges
- Double doors at the bottom
- With roller blind structure

DRY FOOD ISLAND RACK



Type	Style	Ref. No	EXT Dimension (mm)
		STF17031	1200x700x1400
Acrylic box	No lid	STF17032	300x280x200
	No lid, full set	STF17033	/

Dry Food Displays

- Iron structure is made of iron square tube with black scrub surface
- Wood is made of 14-15mm multi-layer boards
- 5 level shelf
- Size and colour can be customised

WOODEN 5 LEVEL SHELF



Style	Type	Ref. No	EXT Dimension (mm)
Single unit		STF17006	1200x400x1800
		STF17007	1200x400x2400
	Post	STF17008	/
Double sided unit		STF17009	1200x700x1350
	Post	STF17010	/
	End unit	STF17011	700x350x1350

- Iron structure is made of iron square tube with black scrub surface
- Wood made of multi-layer board with door panels and bottom panels
- 3 step display, acrylic box can be used
- Size and colour can be customised

3 STEP DRY FOOD DISPLAY



Type	Style	Ref. No	EXT Dimension (mm)
End unit		STF17023	1200x750x900
	Round	STF17026	1530x765x900
	Angle	STF17028	1530x750x580
Acrylic box	No lid	STF17024	300x245x160
	No lid full set for round unit	STF17027	/
	With lid	STF17025	300x245x160

Dry Food Displays

- Wood made of multi-layer board
- Iron structure is made of iron square tube with black scrub surface

CORNER SET



Ref. No
STF17035

CORNER SET



Ref. No
STF17036

- Structure made of iron square tube and wires

PROMOTIONAL DISPLAY



Ref. No
STF17037

EXT Dimension (mm)
1000x1000x700

Dry Food Displays

- Body made of cold-rolled steel
- Signage at top
- Wall with 25 acrylic boxes
- Large bottom drawer for storage

CANDY WALL WITH 25 BOXES



Ref. No	EXT Dimension (mm)
STF17012	920x480x1800

- Body is made of cold-rolled steel
- With 5 level shelf or 25 hooks
- Large bottom drawer for storage

CANDY WALL WITH 5 SHELF / 25 HOOKS



STF17013



STF17014

Style	Ref. No	EXT Dimension (mm)
With shelves	STF17013	920x480x1800
With hooks	STF17014	1160x480x1800

Dry Food Displays

- Body is made of cold-rolled steel
- Double-sided shelf with 40 boxes
- Large bottom drawer for storage

CANDY DOUBLE-SIDED SHELF WITH 40 BOXES



Ref. No	EXT Dimension (mm)
STF17015	1160x920x1350

- Structure consists of 14-15mm multi-layer board for the wood and 1.0mm cold-rolled steel tube
- Display capacity of 4 wooden drawers (2 layers)
- All wood structure is in option
- Colour and size can be customised

WALL WINE SHELF



Ref. No	EXT Dimension (mm)
STF17016	1000x770x2400

Dry Food Displays

- Structure consists of 14-15mm multi-layer board for the wood and 1.0mm cold-rolled steel tube
- 4 layer shelf each side
- Colour and size can be customised

WINE SHELF WITH CURVED EDGE DESIGN



Ref. No EXT Dimension (mm)
STF17017 1600x800x1350

- All wood structure made of 14-15mm multi-layer board
- 5 layer shelf at each side
- Colour and size can be customised

WOODEN WINE SHELF



Ref. No EXT Dimension (mm)
STF17020 1200x500x1350

- 20mm double tempered glass with 48 holes
- With stainless steel mirror
- Without light

WOODEN WINE SHELF



Ref. No EXT Dimension (mm)
STF17018 1280x560x2400

Dry Food Displays

- Structure consists of 14-15mm multi-layer board for the wood and 1.0mm cold-rolled steel tube
- 5 level shelf and 8 small wooden boxes
- Acrylic signage board
- All wood structure is an option
- Size and colour can be customised

WOODEN WALL WINE SHELF



Ref. No EXT Dimension (mm)
STF17019 1150x500x2400

- Structure consists of 14-15mm multi-layer board for the wood and 1.0mm cold-rolled steel tube
- Large storage capacity
- All wood structure is an option
- Colour and size can be customised

WALL WINE SHELF



Ref. No EXT Dimension (mm)
STF17021 500x2400

Grain Displays

- E1 grade triamine board
- ABS extruded strip, ABS end cap
- 8mm tempered glass, height 100mm
- PP foot pad

RICE / GRAIN FLOOR DISPLAY



Ref. No	Glass Partition Height (mm)	EXT Dimension (mm)
STF17038	100	700x700x850
STF17039	250	700x700x850

- Wood made of multi-layer board
- Size and colour can be customised
- Iron structure made of iron square tube with black scrub surface

RICE / GRAIN SHELVES



Type	Ref. No	EXT Dimension (mm)
	STF17040	1200x650x2400
Glass partition	STF17041	/

Grain Displays

- Material: Wooden part made of multi-layer board
- Size and colour can be customised
- Iron part: Iron square tube with black scrub surface

RICE / GRAIN ISLAND DISPLAY



Type	Ref. No	EXT Dimension (mm)
End unit	STF17042	1200x800x1450
Middle unit	STF17043	1600x800
Glass partition	STF17044	/

RICE / GRAIN ISLAND DISPLAY



Ref. No	EXT Dimension (mm)
STF17045	1200x800x1250
STF17046	1600x750x800

Grain Dispensers

- Material: PCTG/PC
- Colour: Transparent

GRAVITY DISPENSER WIDTH 150MM



Ref. No	Capacity (L)	Weight (kg)	EXT Dimension (mm)
STF17101	19	3.5	710x350x150
STF17102	13	2.5	570x350x150
STF17103	8	2	435x350x150

GRAVITY DISPENSER WIDTH 100MM



Ref. No	Capacity (L)	Weight (kg)	EXT Dimension (mm)
STF17104	6	2.4	460x350x100
STF17105	10	2.8	570x350x100
STF17106	13	3.1	710x350x100

- Material: Iron or ABS depending on model

GRAVITY DISPENSER HOOK SUPPORT



Ref. No	Weight (kg)
STF17107	2.4
STF17108	2.8

Grain Dispensers

- Material: PCTG/PC
- Colour: Transparent

BULK SCOOP BIN 13L



Ref. No	Capacity (L)	Weight (kg)	EXT Dimension (mm)
STF17109	13	2	350x320x222

BULK SCOOP BIN 10L



Ref. No	Capacity (L)	Weight (kg)	EXT Dimension (mm)
STF17110	10	2.5	350x315x222

BULK SCOOP BIN 22L



Ref. No	Capacity (L)	Weight (kg)	EXT Dimension (mm)
STF17113	22	3	340x420x300

Grain Dispensers

- Material: PCTG
- Colour: Transparent

BULK SCOOP BIN 13.5L



Ref. No	Capacity (L)	Weight (kg)	EXT Dimension (mm)
STF17120	13.5	1.7	330x285x220

- Material: PCTG/PC
- Colour: Transparent

AIRTIGHT BULK SCOOP BIN 6L



Ref. No	Capacity (L)	Weight (kg)	EXT Dimension (mm)
STF17111	6	0.8	200x180x200

BULK SCOOP BIN 8L



Ref. No	Capacity (L)	Weight (kg)	EXT Dimension (mm)
STF17112	8	1.3	222x250x290

Grain Dispensers

- Material: PCTG/PC
- Colour: Transparent

BULK SCOOP BIN 5.5L



Ref. No	Capacity (L)	Weight (kg)	EXT Dimension (mm)
STF17114	5.5	1	180x250x300

STACKABLE BULK SCOOP BIN 8L



Stacked view

Ref. No	Capacity (L)	Weight (kg)	EXT Dimension (mm)
STF17115	8	1.1	250x300x220

- Material: PCTG
- Colour: Transparent

BULK SCOOP BIN 5L



Ref. No	Capacity (L)	Weight (kg)	EXT Dimension (mm)
STF17118	5	0.9	200x245x153

Grain Dispensers

- Material: PCTG
- Colour: Transparent

BULK SCOOP BIN 5L



Ref. No	Capacity (L)	Weight (kg)	EXT Dimension (mm)
STF17119	5	0.7	140x140x240

- Material: PP and PC
- Colour: Transparent

BULK SCOOP BIN 10L / 22L



Ref. No	Capacity (L)	EXT Dimension (mm)
STF17116	10	336x230x110
STF17117	22	437x352x142

Grain Dispensers

- Material: PCTG and iron
- Colour: Black

GRAVITY DISPENSER



Ref. No	Capacity (L)	Weight (kg)	EXT Dimension (mm)
STF17121	13+13	14.5	340x455x103
STF17122	8+8	11.1	340x455x903

- Material: Acrylic
- Colour: Black

BAG DISPENSER



Type	Ref. No	Net Weight (kg)	EXT Dimension (mm)
2 separators, double layer	STF17123	1.1	300x205x133
3 separators, double layer	STF17124	1.3	330x370x133

Gondolas

- Material: Cold-reduced steel
- Load capacity: 80kg/shelf
- Thickened reinforced welding leg
- Customisable size
- Column rectangular card slot design
- Colour: White, black, grey or customised RAL

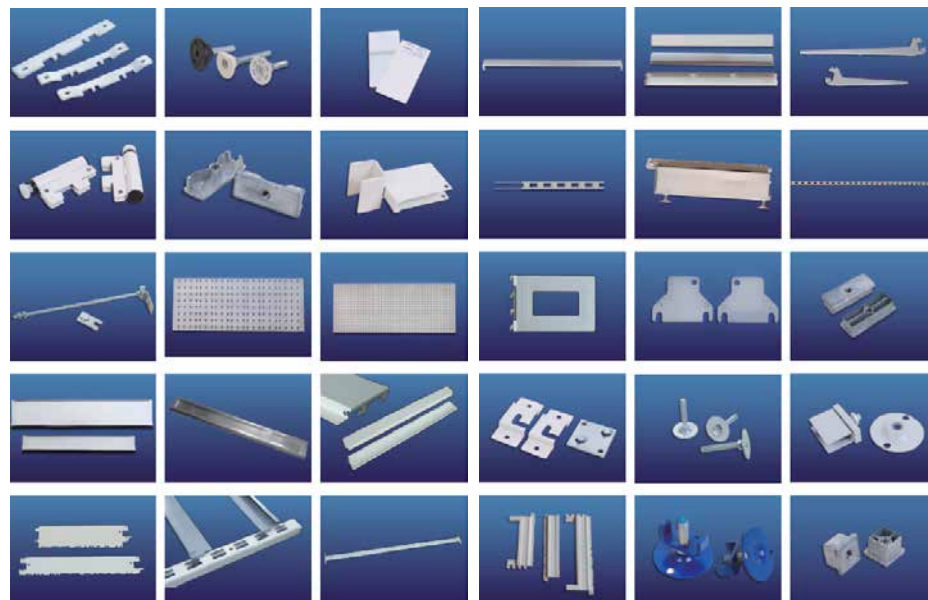
STANDARD GONDOLA SERIE



Ref. No	Height Range (mm)	Length (mm)	Shelf Width (mm)	Shelf (mm)	Bracket (mm)	Back Panel (mm)	Top Cover & Plinth (mm)
STF17201	1410-2410	665	300	0.8	2.5	0.5	0.7
		1000	370				
		1250	470				
		1330	570				

- Customisable size

STANDARD GONDOLA ACCESSORIES



Ref. No
STF17202

Gondolas

- Material: Steel

ITALY TYPE SHELF



Type	Ref. No	EXT Dimension (mm)	Upright (mm)	Layer Panel (mm)	Back Panel (mm)	Bracket (mm)
Single side	STF17203	1200x500x2000	30x60x(1.5-2.0) 30x70x(1.5-2.0)	0.6-0.8	0.5-1.5	1.8-2.5
Double side	STF17204	1200x1000x1800	30x80x(1.5-2.0) 30x110x(1.5-2.0)			
End shelf	STF17205	1200x500x1800	40x60x(1.8-2.0) 40x80x(2.0-2.5)			

ROUND ENDING SHELF



Type	Ref. No	EXT Dimension (mm)	Upright (mm)	Layer Panel (mm)	Back Panel (mm)	Bracket (mm)
Single side	STF17206	1200x500x2000	30x60x(1.5-2.0) 30x70x(1.5-2.0)	0.5-0.8	0.5-0.8	2.0-3.0
Double side	STF17207	1200x1000x1800	30x80x(1.5-2.0) 30x110x(1.5-2.0)			
End shelf	STF17208	1200x500x1800	40x60x(1.8-2.0) 40x80x(2.0-2.5)			

Gondolas

- Material: Steel
- Load capacity: 80kg/shelf
- Customisable size
- Colour: White, black, grey or customised RAL

STANDARD COSMETIC SHELF



Ref. No	Height Range (mm)	Length (mm)	Shelf Width (mm)	Shelf (mm)	Bracket (mm)	Back Panel (mm)	Top Cover & Plinth (mm)
STF17209	1410-2410	665	300				
		1000	370	0.8	2.5	0.5	0.7
		1250	470				
		1330	570				

- Material: Steel

ARC BRACKET COSMETIC SHELF



Type	Ref. No	EXT Dimension (mm)	Upright (mm)	Layer Panel (mm)	Back Panel (mm)	Bracket (mm)
Single side	STF17210	1200x500x2000				
Double side	STF17211	1200x1000x1500	40x60x(1.5-2.0)	Glass	0.5-0.8	2.0-2.5
End shelf	STF17212	1000x500x1500	40x80x(1.5-2.0)			

Gondolas

- Material: Cold-reduced steel
- Column rectangular card slot design

ROUND ENDING COSMETIC SHELF



Type	Ref. No	EXT Dimension (mm)	Upright (mm)	Layer Panel (mm)	Back Panel (mm)	Bracket (mm)
Single side	STF17213	1200x500x2000	30x60x(1.5-2.0)			
Double side	STF17214	1200x1000x1500	40x60x(1.5-2.0)	Glass	0.5-0.8	2.0-2.5
End shelf	STF17215	1000x500x1500	40x80x(1.5-2.0)			

- Material: Cold-reduced steel
- Steel reinforcement at the bottom
- Option of both glass shelf or wooden shelf
- Inner LED tube at price tag placements
- Customised pattern design on the sides

FASHION COSMETIC GONDOLA



Type	Ref. No	EXT Dimension (mm)	Upright (mm)	Layer Panel (mm)	Back Panel (mm)	Bracket (mm)
Single side	STF17216	1200x450x1350				
Double side	STF17217	1200x900x1350	30x60x(1.5-2.0)	Glass	0.5-0.8	1.5-2.5
End shelf	STF17218	900x450x1350				

Gondolas

- Material: Cold-reduced steel
- Shelves are made of glass and steel frame
- Steel reinforcement at the bottom
- Light tube designed in front of the shelves to highlight price tag and product
- Customised pattern design on the sides

FASHION COSMETIC GONDOLA



Type	Ref. No	EXT Dimension (mm)	Upright (mm)	Layer Panel (mm)	Back Panel (mm)	Bracket (mm)
Single side	STF17219	1200x500x1800				
Double side	STF17220	1200x1000x1500	40x80x2.0	Glass	0.5-0.8	2.5-3.0
End shelf	STF17221	1000x500x1500				

- Material: Cold-reduced steel
- Card slot design
- Choice of box beam or step beam

HEAVY DUTY INTEGRATED SHELF



Ref. No
STF17222

Gondolas

- Material: Steel

SPORT EQUIPMENT SHELF



Type	Ref. No	EXT Dimension (mm)	Upright (mm)	Layer Panel (mm)	Back Panel (mm)	Bracket (mm)
Single side	STF17223	1200x500x2000	30x60x(1.5-2.0) 30x70x(1.5-2.0)			
Double side	STF17224	1200x1000x1800	30x80x(1.5-2.0) 30x110x(1.5-2.0)	0.5-0.8	0.5-0.8	2.0-3.0
End shelf	STF17225	1200x500x1800	40x60x(1.8-2.0) 40x80x(2.0-2.5)			

- Material: Cold-reduced steel
- H form card slot design
- Can hold over 220kg per level

DISPLAY RACK FOR BOTTLES



Type	Ref. No
Single side	STF17226
Double side	STF17227
End shelf	STF17228

Gondolas

- Material: Cold-reduced steel
- H form card slot design

CORNER SHELF



Type	Ref. No
Single side	STF17229

- Material: Cold-reduced steel
- Fixed holes on the back panel to hang 55" TV

TV SHELF



Type	Ref. No	Back Panel (mm)
Single side	STF17230	1.2

Gondolas

- Material: Cold-reduced steel

BOOK SHELF



Type	Ref. No
Single side	STF17231

BOOK SHELF



Type	Ref. No
Single side	STF17232

CHECK-OUT GONDOLA



Ref. No
STF17238

Gondolas

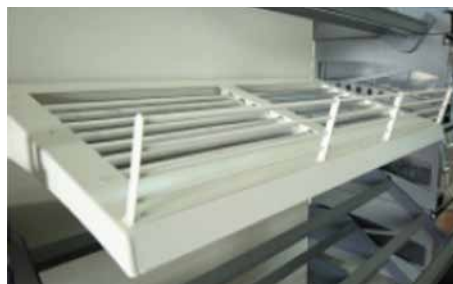
- Material: Cold-reduced steel

SHELF FOR ACCESSORIES



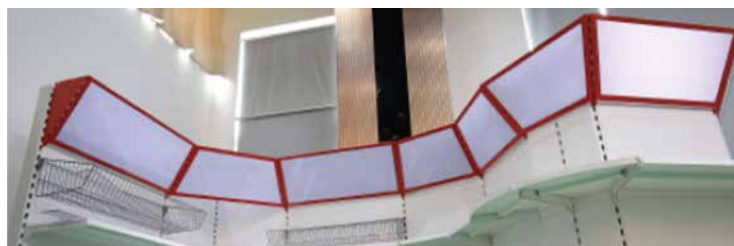
Ref. No
STF17233

SLIDING SHELF



Ref. No
STF17234

LIGHT BOX



Ref. No
STF17235

RACK



STF17236



STF17237

Type	Ref. No
For wire	STF17236
For table cloth	STF17237



WAREHOUSE SHELVING AND TROLLEYS

Warehouse racks	p.131
Cold room aluminium shelving	p.134
Cold room PP coated shelving	p.136
Wire shelving	p.139
Storage cages	p.141
Roll containers	p.143
Ladder trolleys	p.147
Plastic pallets	p.149

Warehouse Racks

- Material: Steel

HEAVY-DUTY WAREHOUSE RACK WITHOUT LAYER PANEL



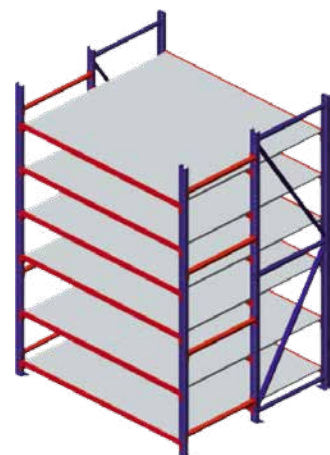
Ref. No	EXT Dimension (mm)	Upright (mm)	Panel (mm)	P Type Pipe (mm)
STF16001	2500x1000x3000	70x90x(1.8-2.5) 60x80x(1.5-2.0)	50x(80-160)x(1.5-2.0)	2.5-3.0

HEAVY-DUTY WAREHOUSE RACK WITH LAYER PANEL



Ref. No	EXT Dimension (mm)	Upright (mm)	Layer Panel (mm)	Beam (mm)	P Type Pipe (mm)
STF16002	2500x1000x3000	70x90x2.0	0.8-1.0	1.5-2.0	50x110x(2.0-2.5)

HEAVY-DUTY DOUBLE WAREHOUSE RACK WITH LAYER PANEL



Ref. No	EXT Dimension (mm)	Upright (mm)	Layer Panel (mm)	Beam (mm)
STF16004	2000x1200x2000	40x80x(1.2-2.0)	0.5-0.8	40x60x(1.0-2.0)

Warehouse Racks

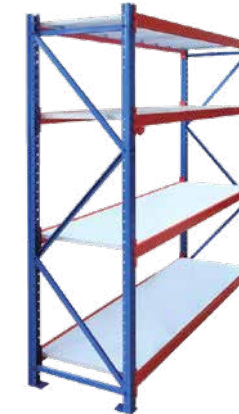
- Material: Steel

MEDIUM-DUTY WAREHOUSE RACK WITH LAYER PANEL



Ref. No	EXT Dimension (mm)	Upright (mm)	Layer Panel (mm)	Beam (mm)
STF16003	2000x600x2000	40x80x(1.2-2.0)	0.5-0.8	40x60x(1.0-2.0)

LIGHT-DUTY WAREHOUSE RACK WITH LAYER PANEL



Ref. No	EXT Dimension (mm)	Upright (mm)	Layer Panel (mm)	Beam (mm)
STF16005	2000x500x2000	55x47x(1.2-1.8)	0.5-0.8	30x50x(1.0-1.5) 40x60x(1.2-2.0)

STACKABLE RACK



Ref. No	Beam (mm)
STF16006	30x50x(1.0-1.5) 40x60x(1.2-2.0)

Warehouse Racks

- Material: Steel

CANTILEVER WAREHOUSE RACK



Ref. No	Max Loading CPTY (kg)
STF16007	6000/level

DRIVE-IN WAREHOUSE RACK



Ref. No	Max Loading CPTY (kg)
STF16008	6000/level

Cold Room Aluminium Shelving

- Material: Aluminium alloy
- Shelf can be adjusted up or down by 150mm
- Safe to use in environment from -38°C to 88°C
- With or without castors

4 LEVEL ALUMINIUM SHELVING UNIT



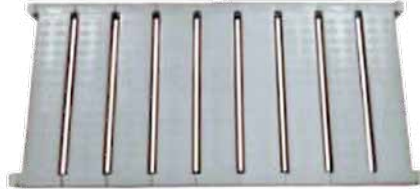
Height (mm)	Width (mm)	Length (mm)	Ref. No		
1550	360	905	STF16100		
		1085	STF16101		
		1265	STF16102		
		1355	STF16103		
		1535	STF16104		
	450	360	1805	STF16105	
			905	STF16106	
			1085	STF16107	
			1265	STF16108	
			1355	STF16109	
		540	1535	STF16110	
			1805	STF16111	
			905	STF16112	
			1085	STF16113	
			1265	STF16114	
1700	540	1355	STF16115		
		1535	STF16116		
		1805	STF16117		
		905	STF16118		
		1085	STF16119		
	630	540	1265	STF16120	
			1355	STF16121	
			1535	STF16122	
			1805	STF16123	
			905	STF16124	
		360	630	1085	STF16125
				1265	STF16126
				1355	STF16127
				1535	STF16128
				1805	STF16129
2450	450		905	STF16130	
			1085	STF16131	
			1265	STF16132	
			1355	STF16133	
			1535	STF16134	
	540	450	1805	STF16135	
			905	STF16136	
			1085	STF16137	
			1265	STF16138	
			1355	STF16139	
		630	540	1535	STF16140
				1805	STF16141
				905	STF16142
				1085	STF16143
				1265	STF16144
630	1355		STF16145		
	1535		STF16146		
	1805		STF16147		

Height (mm)	Width (mm)	Length (mm)	Ref. No		
2000	360	905	STF16148		
		1085	STF16149		
		1265	STF16150		
		1355	STF16151		
		1535	STF16152		
	450	360	1805	STF16153	
			905	STF16154	
			1085	STF16155	
			1265	STF16156	
			1355	STF16157	
		540	1535	STF16158	
			1805	STF16159	
			905	STF16160	
			1085	STF16161	
			1265	STF16162	
2450	540	1355	STF16163		
		1535	STF16164		
		1805	STF16165		
		905	STF16166		
		1085	STF16167		
	630	540	1265	STF16168	
			1355	STF16169	
			1535	STF16170	
			1805	STF16171	
			905	STF16172	
		360	630	1085	STF16173
				1265	STF16174
				1355	STF16175
				1535	STF16176
				1805	STF16177
450	630		905	STF16178	
			1085	STF16179	
			1265	STF16180	
			1355	STF16181	
			1535	STF16182	
	540		450	1805	STF16183
				905	STF16184
				1085	STF16185
				1265	STF16186
				1355	STF16187
630		1535	STF16188		
		1805	STF16189		
		905	STF16190		
		1085	STF16191		
		1265	STF16192		
630	1355	STF16193			
	1535	STF16194			
	1805	STF16195			

Cold Room Aluminium Shelving

- Material: Alumimium
- Safe to use in enviroment -38°C
- Weight bearing capacity per shelf for stationary unit is 170kg to 250kg, moving unit is 110kg

SINGLE ALUMINIUM SHELF PLATE



Width (mm)	Length (mm)	Ref. No
360	905	STF16196
	1085	STF16197
	1265	STF16198
	1355	STF16199
	1535	STF16200
	1805	STF16201
450	905	STF16202
	1085	STF16203
	1265	STF16204
	1355	STF16205
	1535	STF16206
	1805	STF16207
540	905	STF16208
	1085	STF16209
	1265	STF16210
	1355	STF16211
	1535	STF16212
	1805	STF16213
630	905	STF16214
	1085	STF16215
	1265	STF16216
	1355	STF16217
	1535	STF16218
	1805	STF16219

Cold Room PP Coated Shelving

- Made of steel core with PP exterior
- Safe to use in environment from -38°C to 88°C
- Shelf can be adjusted up or down by 100mm

4 LEVEL PP COATED SHELVING STARTER UNIT



Height (mm)	Width (mm)	Length (mm)	Ref. No
1600	355	910	STF13300
		1060	STF13301
		1220	STF13302
		1370	STF13303
		1525	STF13304
		1825	STF13305
	455	910	STF13306
		1060	STF13307
		1220	STF13308
		1370	STF13309
		1525	STF13310
		1825	STF13311
	530	910	STF13312
		1060	STF13313
		1220	STF13314
		1370	STF13315
		1525	STF13316
		1825	STF13317
610	910	STF13318	
	1060	STF13319	
	1220	STF13320	
	1370	STF13321	
	1525	STF13322	
	1825	STF13323	

Height (mm)	Width (mm)	Length (mm)	Ref. No
1800	355	910	STF13324
		1060	STF13325
		1220	STF13326
		1370	STF13327
		1525	STF13328
		1825	STF13329
	455	910	STF13330
		1060	STF13331
		1220	STF13332
		1370	STF13333
		1525	STF13334
		1825	STF13335
	530	910	STF13336
		1060	STF13337
		1220	STF13338
		1370	STF13339
		1525	STF13340
		1825	STF13341
2000	355	910	STF13342
		1060	STF13343
		1220	STF13344
		1370	STF13345
		1525	STF13346
		1825	STF13347
	455	910	STF13348
		1060	STF13349
		1220	STF13350
		1370	STF13351
		1525	STF13352
		1825	STF13353
	530	910	STF13354
		1060	STF13355
		1220	STF13356
		1370	STF13357
		1525	STF13358
		1825	STF13359
610	910	STF13360	
	1060	STF13361	
	1220	STF13362	
	1370	STF13363	
	1525	STF13364	
	1825	STF13365	
610	910	STF13366	
	1060	STF13367	
	1220	STF13368	
	1370	STF13369	
	1525	STF13370	
	1825	STF13371	

Cold Room PP Coated Shelving

- Made of steel core with PP exterior
- Safe to use in environment from -38°C to 88°C
- Shelf can be adjusted up or down by 100mm

PP COATED SHELVING STARTER ADD-ON UNIT



Height (mm)	Width (mm)	Length (mm)	Ref. No
1600	355	910	STF13372
		1060	STF13373
		1220	STF13374
		1370	STF13375
		1525	STF13376
		1825	STF13377
	455	910	STF13378
		1060	STF13379
		1220	STF13380
		1370	STF13381
		1525	STF13382
		1825	STF13383
	530	910	STF13384
		1060	STF13385
		1220	STF13386
		1370	STF13387
		1525	STF13388
		1825	STF13389
610	910	STF13390	
	1060	STF13391	
	1220	STF13392	
	1370	STF13393	
	1525	STF13394	
	1825	STF13395	

Height (mm)	Width (mm)	Length (mm)	Ref. No
1800	355	910	STF13396
		1060	STF13397
		1220	STF13398
		1370	STF13399
		1525	STF13400
		1825	STF13401
	455	910	STF13402
		1060	STF13403
		1220	STF13404
		1370	STF13405
		1525	STF13406
		1825	STF13407
	530	910	STF13408
		1060	STF13409
		1220	STF13410
		1370	STF13411
		1525	STF13412
		1825	STF13413
610	910	STF13414	
	1060	STF13415	
	1220	STF13416	
	1370	STF13417	
	1525	STF13418	
	1825	STF13419	
2000	355	910	STF13420
		1060	STF13421
		1220	STF13422
		1370	STF13423
		1525	STF13424
		1825	STF13425
	455	910	STF13426
		1060	STF13427
		1220	STF13428
		1370	STF13429
		1525	STF13430
		1825	STF13431
	530	910	STF13432
		1060	STF13433
		1220	STF13434
		1370	STF13435
		1525	STF13436
		1825	STF13437
610	910	STF13438	
	1060	STF13439	
	1220	STF13440	
	1370	STF13441	
	1525	STF13442	
	1825	STF13443	

Cold Room PP Coated Shelving

- Material: PP
- Safe to use in environment -38°C
- Weight bearing capacity per shelf 600kg to 1400kg depending on length

VENTED SHELF PLATE



Width (mm)	Length (mm)	Ref. No
355	910	STF13444
	1060	STF13445
	1220	STF13446
	1370	STF13447
	1525	STF13448
	1825	STF13449
455	910	STF13450
	1060	STF13451
	1220	STF13452
	1370	STF13453
	1525	STF13454
	1825	STF13455
530	910	STF13456
	1060	STF13457
	1220	STF13458
	1370	STF13459
	1525	STF13460
	1825	STF13461
610	910	STF13462
	1060	STF13463
	1220	STF13464
	1370	STF13465
	1525	STF13466
	1825	STF13467

Wire Shelving

- Material: Stainless steel 201 or 304
- Each shelf supports up to 250kg without castors

4 LEVEL STAINLESS STEEL WIRE SHELVING UNIT



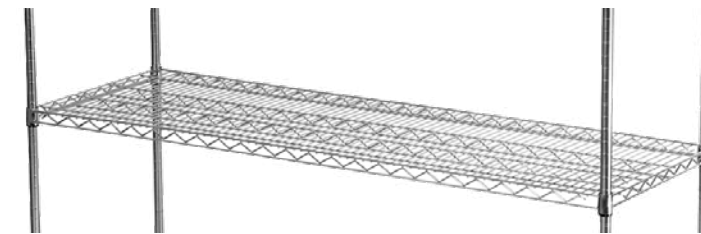
Height (mm)	Width (mm)	Length (mm)	Ref. No	
			SS 201	SS 304
1600	355	355	STF13500	STF13608
		455	STF13501	STF13609
		610	STF13502	STF13610
		760	STF13503	STF13611
		910	STF13504	STF13612
		1060	STF13505	STF13613
		1220	STF13506	STF13614
		1370	STF13507	STF13615
		1525	STF13508	STF13616
	1825	STF13509	STF13617	
	455	610	STF13510	STF13618
		760	STF13511	STF13619
		910	STF13512	STF13620
		1060	STF13513	STF13621
		1220	STF13514	STF13622
		1370	STF13515	STF13623
		1525	STF13516	STF13624
		1825	STF13517	STF13625
530		610	STF13518	STF13626
	760	STF13519	STF13627	
	910	STF13520	STF13628	
	1060	STF13521	STF13629	
	1220	STF13522	STF13630	
	1370	STF13523	STF13631	
	1525	STF13524	STF13632	
	1825	STF13525	STF13633	
	610	610	STF13526	STF13634
760		STF13527	STF13635	
910		STF13528	STF13636	
1060		STF13529	STF13637	
1220		STF13530	STF13638	
1370		STF13531	STF13639	
1525		STF13532	STF13640	
1825		STF13533	STF13641	

Height (mm)	Width (mm)	Length (mm)	Ref. No	
			SS 201	SS 304
1800	355	355	STF13534	STF13642
		455	STF13535	STF13643
		610	STF13536	STF13644
		760	STF13537	STF13645
		910	STF13538	STF13646
		1060	STF13539	STF13647
		1220	STF13540	STF13648
		1370	STF13541	STF13649
		1525	STF13542	STF13650
	1825	STF13543	STF13651	
	455	610	STF13544	STF13652
		760	STF13545	STF13653
		910	STF13546	STF13654
		1060	STF13547	STF13655
		1220	STF13548	STF13656
		1370	STF13549	STF13657
		1525	STF13550	STF13658
		1825	STF13551	STF13659
530		610	STF13552	STF13660
	760	STF13553	STF13661	
	910	STF13554	STF13662	
	1060	STF13555	STF13663	
	1220	STF13556	STF13664	
	1370	STF13557	STF13665	
	1525	STF13558	STF13666	
	1825	STF13559	STF13667	
	610	610	STF13560	STF13668
760		STF13561	STF13669	
910		STF13562	STF13670	
1060		STF13563	STF13671	
1220		STF13564	STF13672	
1370		STF13565	STF13673	
1525		STF13566	STF13674	
1825		STF13567	STF13675	

Wire Shelving

- Material: Stainless steel 201 or 304
- Each shelf supports up to 250kg without castors

STAINLESS STEEL WIRE SHELVING UNIT



Type	Width (mm)	Length (mm)	Ref. No		
			SS 201	SS 304	
Pole	Ø25	1600	STF13602	STF13710	
		1800	STF13603	STF13711	
		355	355	STF13568	STF13676
			455	STF13569	STF13677
			610	STF13570	STF13678
			760	STF13571	STF13679
			910	STF13572	STF13680
			1060	STF13573	STF13681
			1220	STF13574	STF13682
			1370	STF13575	STF13683
			1525	STF13576	STF13684
		1825	STF13577	STF13685	
		455	610	STF13578	STF13686
			760	STF13579	STF13687
			910	STF13580	STF13688
			1060	STF13581	STF13689
			1220	STF13582	STF13690
			1370	STF13583	STF13691
1525	STF13584		STF13692		
1825	STF13585		STF13693		
530	610		STF13586	STF13694	
	760	STF13587	STF13695		
	910	STF13588	STF13696		
	1060	STF13589	STF13697		
	1220	STF13590	STF13698		
	1370	STF13591	STF13699		
	1525	STF13592	STF13700		
	1825	STF13593	STF13701		
	610	610	STF13594	STF13702	
760		STF13595	STF13703		
910		STF13596	STF13704		
1060		STF13597	STF13705		
1220		STF13598	STF13706		
1370		STF13599	STF13707		
1525		STF13600	STF13708		
1825		STF13601	STF13709		

CASTOR FOR WIRE SHELVING UNIT



Type	Ref. No	EXT Dimension (mm)
With brake	STF13604	101.6 (4")
	STF13606	127 (5")
Without brake	STF13605	101.6 (4")
	STF13607	127 (5")

Storage Cages

- Material: Steel with zinc coating and finishing

FOLDABLE STORAGE CAGE



Ref. No	EXT Dimension (mm)	Wire Diameter (mm)	Bearing (kg)
STF13800	1200x1000x890	6/5	500/1000

STORAGE CAGE



Ref. No	EXT Dimension (mm)	Wire Diameter (mm)	Bearing (kg)
STF13801	600x600x700	5	100

FOLDABLE WIRE PALLET CAGE



Ref. No	EXT Dimension (mm)	Wire Diameter (mm)	Bearing (kg)
STF13802	1200x800x800	6	300/500

Storage Cages

- Material: Steel with zinc coating and finishing

HEAVY-DUTY STORAGE CAGE



Ref. No	EXT Dimension (mm)	Wire Diameter (mm)	Bearing (kg)
STF13803	1200x800x930	6	1500

WIRE FEET STORAGE CAGE



Ref. No	EXT Dimension (mm)	Wire Diameter (mm)	Bearing (kg)
STF13804	800x580x670	6	300/500

Roll Containers

- Material: Steel with zinc coating and finishing

DISASSEMBLE ROLL CONTAINER



Ref. No	EXT Dimension (mm)	Castor Size (inch)
STF13814	850x670x1750	5

DISASSEMBLE ROLL CONTAINER



Ref. No	EXT Dimension (mm)	Castor Size (inch)
STF13815	830x700x1740	5

FOLDING ROLL CONTAINER



Ref. No	EXT Dimension (mm)	Castor Size (inch)
STF13816	830x705x1730	5

Roll Containers

- Material: Steel with zinc coating and finishing

FOLDING CONTAINER WITH DOOR



Ref. No	EXT Dimension (mm)	Castor Size (inch)
STF13817	850x700x1750	5

FOLDABLE ROLL CONTAINER



Ref. No	EXT Dimension (mm)	Castor Size (inch)
STF13819	850x670x1750	5

SECURITY ROLL CONTAINER



Ref. No	EXT Dimension (mm)	Castor Size (inch)
STF13820	830x705x1730	5

Roll Containers

- Material: Steel with powder coating

FOLDING ROLL CONTAINER



Ref. No	EXT Dimension (mm)	Castor Size (inch)
STF13818	1100x800x1700	5

ROLL CONTAINER WITH 2 DOORS



Ref. No	EXT Dimension (mm)	Castor Size (inch)
STF13821	1100x800x1700	5

ROLL CONTAINER WITH 4 DOORS



Ref. No	EXT Dimension (mm)	Castor Size (inch)
STF13822	1100x800x1700	5

Roll Containers

- Material: Steel

ROLL CONTAINER



Ref. No	EXT Dimension (mm)
STF13823	685x710x1020

FOLDING ROLL CONTAINER



Ref. No	EXT Dimension (mm)
STF13824	810x695x1570

Ladder Trolleys

- Material: Steel with powder coating

FOLDING LADDER TROLLEY



Ref. No	EXT Dimension (mm)
STF13835	1060x530x1040

LADDER TROLLEY



Ref. No	EXT Dimension (mm)
STF13836	1200x600x1300 (2000)

LADDER TROLLEY



Ref. No	EXT Dimension (mm)
STF13837	1100x500x1800
STF13838	1300x600x2200
STF13839	1600x700x2800

Ladder Trolleys

- Material: Steel with powder coating

LADDER TROLLEY



Ref. No	EXT Dimension (mm)
STF13840	1100x600x1500

LADDER TROLLEY



Ref. No	EXT Dimension (mm)
STF13841	600x500x1000

LADDER TROLLEY

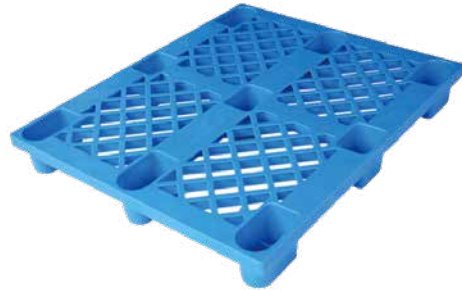


Ref. No	EXT Dimension (mm)
STF13842	500x400x900

Plastic Pallets

- Comes in red or blue

LIGHT-DUTY PLASTIC PALLET



Ref. No	EXT Dimension (mm)	Capacity (T)	
		Static	Dynamic
STF13847	1000x800x150	1	0.7
STF13848	1000x1000x150	1	0.7
STF13849	1200x800x150	1.2	0.8
STF13850	1200x1000x150	2	1
STF13851	1100x1100x150	1.5	0.8
STF13852	1200x1000x150	1.5	0.8

HEAVY-DUTY PLASTIC PALLET



Ref. No	EXT Dimension (mm)	Capacity (T)	
		Static	Dynamic
STF13853	800x800x150	1	0.5
STF13854	1000x600x150	1	0.8
STF13855	1000x800x150	3	0.8
STF13856	1000x1000x150	3	1.2
STF13857	1200x800x150	3	1.2
STF13858	1200x1000x150	3	1.2
STF13859	1000x600x150	1	0.8
STF13860	800x800x150	1	0.5

PALLET SEPARATOR



Ref. No	EXT Dimension (mm)	Capacity (T)	
		Static	Dynamic
STF13861	1000x800x150	1	0.7
STF13862	1000x1000x150	1	0.7
STF13863	1200x800x150	1.2	0.8
STF13864	1200x1000x150	2	1
STF13865	1100x1100x150	1.5	0.8
STF13866	1200x1000x150	1.5	0.8



CHECKOUT COUNTERS AND GATES

Checkout counters p.151
 Swing gates p.160

Checkout Counters

- 0.8mm stainless steel
- 0.8mm body steel
- With aluminium alloy edge

CHECKOUT COUNTER



Ref. No	EXT Dimension (mm)	
	Main Body	Auxiliary Table
STF18001	2000x600x850	600x600x850

CHECKOUT COUNTER



Ref. No	EXT Dimension (mm)	
	Main Body	Auxiliary Table
STF18002	2000x600x850	600x600x850

CHECKOUT COUNTER



Ref. No	EXT Dimension (mm)	
	Main Body	Auxiliary Table
STF18003	1800x600x850	600x600x850

Checkout Counters

- 0.8mm stainless steel
- 0.8mm body steel
- With aluminium alloy edge

CHECKOUT COUNTER



Ref. No	EXT Dimension (mm)	
	Main Body	Auxiliary Table
STF18004	1800x600x860	600x600x880

CHECKOUT COUNTER



Ref. No	EXT Dimension (mm)	
	Main Body	Auxiliary Table
STF18005	1800x600x850	600x600x850

CHECKOUT COUNTER



Ref. No	EXT Dimension (mm)
STF18006	1100x1100x850

Checkout Counters

- 0.8mm stainless steel
- 0.8mm body steel
- With aluminium alloy edge

CHECKOUT COUNTER



Ref. No	EXT Dimension (mm)
STF18007	1100x1100x850

- 1.0mm stainless steel
- 1.0mm body steel
- With aluminium alloy edge

CHECKOUT COUNTER WITH ELECTRIC CONVEYOR BELT



Ref. No	EXT Dimension (mm)	
	Main Body	Auxiliary Table
STF18008	2300x1100x870	600x600x870

CHECKOUT COUNTER WITH ELECTRIC CONVEYOR BELT

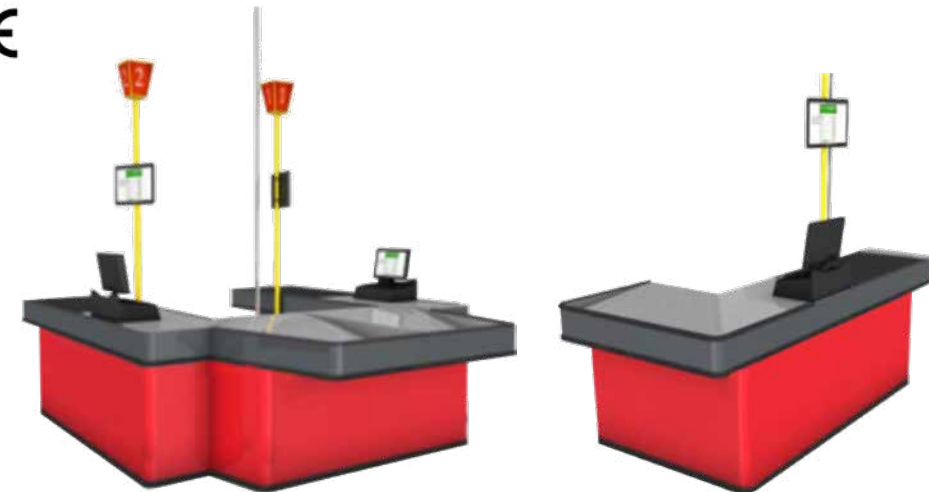


Ref. No	EXT Dimension (mm)	
	Main Body	Auxiliary Table
STF18009	2500x1100x870	600x600x870

Checkout Counters

- 1.0mm 304 stainless steel countertop
- 1.0mm cold-rolled steel
- PVC anti-collision strip
- European/American motor system and drum
- Conveyor belt can bear the weight of 100kg
- Idling time: 20 seconds
- All colour from JOTUN, can be customised

CHECKOUT COUNTER WITH CONVEYOR BELT



Type	Ref. No	EXT Dimension (mm)	Motor Drum (V)
Double	STF18010	3600x2700x900	200
Single	STF18011	2600x1260x900	200

- Stainless steel countertop
- Cold rolled steel body
- Aluminium bumper
- PVC anti-collision strip
- European/American motor system and drum
- Infrared sensor
- Idling time: 20 seconds
- Colour can be customised

CHECKOUT COUNTER WITH CONVEYOR BELT



Ref. No	EXT Dimension (mm)
STF18017	1800x920x900

Checkout Counters

- Stainless steel countertop
- Cold rolled steel body
- Aluminium bumper
- European/American motor system and drum
- Infrared sensor
- Idling time: 20 seconds
- Colour can be customised

CHECKOUT COUNTER WITH CONVEYOR BELT



Ref. No	EXT Dimension (mm)	Motor Drum (V)
STF18013	3000x1150x860	220

- Stainless steel countertop
- Cold rolled steel body
- Aluminium alloy border
- Colour can be customised

CHECKOUT COUNTER



Ref. No	EXT Dimension (mm)
STF18018	1800x1100x860

CHECKOUT COUNTER



Ref. No	EXT Dimension (mm)
STF18019	1500x1100x860

Checkout Counters

- Stainless steel countertop
- Cold rolled steel
- Aluminium alloy
- European/American motor system and drum
- Infrared sensor
- Idling time: 20 seconds
- Colour can be customised

CHECKOUT COUNTER WITH CONVEYOR BELT



Ref. No	EXT Dimension (mm)
STF18015	2800x1150x860

- Stainless steel countertop
- Cold rolled steel body
- PVC anti-collision strip
- Aluminium bumper
- Colour can be customised

CHECKOUT COUNTER



Ref. No	EXT Dimension (mm)
STF18012	1500x1100x860

Checkout Counters

- Stainless steel countertop
- Cold rolled steel body
- Wooden board
- Colour can be customised

CHECKOUT COUNTER



Ref. No	EXT Dimension (mm)
STF18014	1800x1100x860

- Stainless steel countertop
- Cold rolled steel body
- Aluminium alloy border
- Front steel shelf
- Colour can be customised

CHECKOUT COUNTER



Ref. No	EXT Dimension (mm)
STF18016	1800x550x860

Checkout Counters

CHECKOUT COUNTER



Ref. No	EXT Dimension (mm)
STF18020	1500x1100x860

- Stainless steel countertop
- Cold rolled steel body
- Plastic bumper
- Front steel shelf for STF18021
- Colour can be customised

CHECKOUT COUNTER



Ref. No	EXT Dimension (mm)
STF18021	1800x1100x860

CHECKOUT COUNTER



Ref. No	EXT Dimension (mm)
STF18022	1200x1100x860

Checkout Counters

- Stainless steel countertop
- Cold rolled steel body
- Steel shelf

SMALL CHECKOUT COUNTER



Type	Ref. No	EXT Dimension (mm)
	STF18023	600x600x860
Cash register unit	STF18024	600x600x860
Round corner unit	STF18025	600x600x860

SMALL CHECKOUT COUNTER

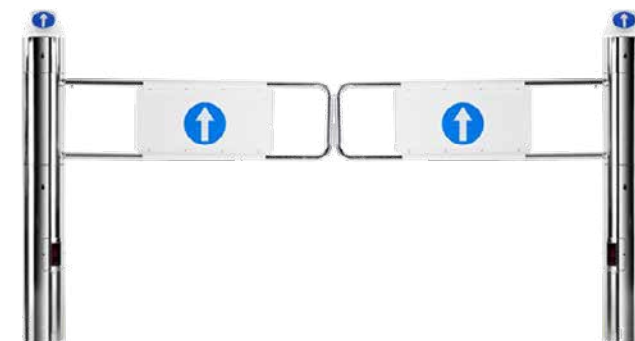


Type	Ref. No	EXT Dimension (mm)
3 shelf unit	STF18026	600x600x860
1 shelf unit	STF18027	600x600x860
Round corner unit	STF18028	600x600x860

Swing Gates

- Material: Steel, chrome plated or satin chrome
- Can be set to open at 90°
- Can be integrated with a variety of control systems, from manually operated, push button to auto sensor

DOUBLE DOOR SWING GATE WITH LAMPSHADE



STF18029

Type	Ref. No	EXT Dimension (mm)
Without support railings	STF18029	2000x1130
With support railings	STF18030	2000x1130

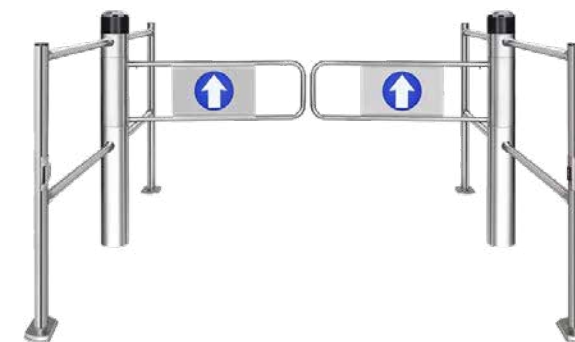
STANDARD DOUBLE DOOR SWING GATE



STF18032

Type	Ref. No	EXT Dimension (mm)
Without support railings	STF18031	2000x1060
With support railings	STF18032	2000x1060

DOUBLE DOOR SWING GATE



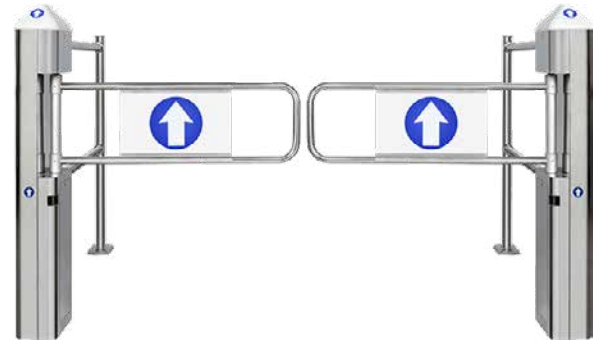
STF18034

Type	Ref. No	EXT Dimension (mm)
With 2 support railings	STF18033	2100x1170
With 4 support railings	STF18034	2400x2100x1170

Swing Gates

- Material: Steel, chrome plated or satin chrome
- Can be set to open at 90°
- Can be integrated with a variety of control systems, from manually operated, push button to auto sensor

DOUBLE DOOR SWING GATE WITH LAMPSHADE



STF18035

Type	Ref. No	EXT Dimension (mm)
With 2 support railings	STF18035	2400x2100x1170
With 4 support railings	STF18036	2400x2100x1170

- Material: Stainless steel, polished or brushed

CONTROL BARRIER

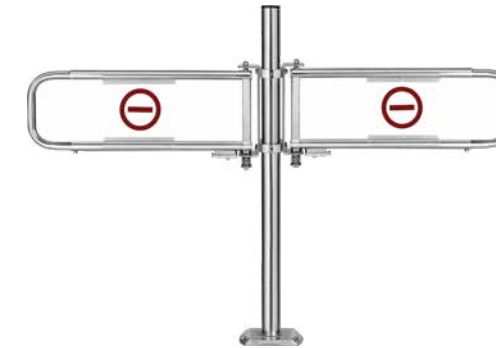


Ref. No	EXT Dimension (mm)
STF18037	1060x900

Swing Gates

- Material: Steel, chrome plated or satin chrome
- Mechanical manual swing
- Can be set to open at 90°

CHECKOUT COUNTER BARRIER GATE



Ref. No	EXT Dimension (mm)
STF18038	2x500-800x385

- Material: Steel, chrome plated or satin chrome
- Available for either clockwise/anti-clockwise configuration or rotate both ways

MECHANICAL OPERATED TURNSTILE



Ref. No	EXT Dimension (mm)
STF18039	1450x1170



SHOPPING TROLLEYS

Wire shopping trolleys p.164
 Plastic shopping trolleys p.169
 Hand basket trolleys p.171
 Children's trolleys p.177
 Special trolleys p.179
 Flat trolleys p.181

Wire Shopping Trolleys

- Material: Steel with zinc, chrome or powder finishing/coating depending on model
- Castor size: 4"-5" depending on model
- Colour can be customised

EUROPEAN STYLE TROLLEY 60L / 80L



Ref. No	EXT Dimension (mm)	Capacity (L)	Castor Size (inch)
STF19001	760x460x930	60	4
STF19002	840x525x960	80	4

EUROPEAN STYLE TROLLEY 110L



Ref. No	EXT Dimension (mm)	Capacity (L)	Castor Size (inch)
STF19003	840x550x975	110	4

EUROPEAN STYLE TROLLEY 130L



Ref. No	EXT Dimension (mm)	Capacity (L)	Castor Size (inch)
STF19004	860x530x1030	130	5

Wire Shopping Trolleys

- Material: Steel with zinc, chrome or powder finishing/coating depending on model
- Castor size: 4"-5" depending on model
- Colour can be customised

EUROPEAN STYLE TROLLEY 150L



Ref. No	EXT Dimension (mm)	Capacity (L)	Castor Size (inch)
STF19005	1000x585x1020	150	5

EUROPEAN STYLE TROLLEY 180L



Ref. No	EXT Dimension (mm)	Capacity (L)	Castor Size (inch)
STF19006	980x595x1000	180	5

EUROPEAN STYLE TROLLEY 190L



Ref. No	EXT Dimension (mm)	Capacity (L)
STF19007	1010x620x990	190

Wire Shopping Trolleys

- Material: Steel with zinc, chrome or powder finishing/coating depending on model
- Castor size: 4"-5" depending on model
- Colour can be customised

EUROPEAN STYLE TROLLEY 270L



Ref. No	EXT Dimension (mm)	Capacity (L)
STF19008	1000x585x1020	270

EUROPEAN STYLE TROLLEY 90L



Ref. No	EXT Dimension (mm)	Capacity (L)	Castor Size (inch)
STF19009	830x550x910	90	5

ASIAN STYLE TROLLEY 60L / 80L / 100L



Ref. No	EXT Dimension (mm)	Capacity (L)	Castor Size (inch)
STF19010	830x550x910	60	4
STF19011	830x550x910	80	4
STF19012	830x550x910	100	4

Wire Shopping Trolleys

- Material: Steel with zinc, chrome or powder finishing/coating depending on model
- Castor size: 4"-5" depending on model
- Colour can be customised

ASIAN STYLE TROLLEY 60L



Ref. No	EXT Dimension (mm)	Capacity (L)
STF19013	830x550x910	60

ASIAN STYLE TROLLEY 120L



Ref. No	EXT Dimension (mm)	Capacity (L)
STF19014	830x550x910	120

ASIAN STYLE TROLLEY 150L



Ref. No	EXT Dimension (mm)	Capacity (L)
STF19015	830x550x910	150

Wire Shopping Trolleys

- Material: Steel with zinc, chrome or powder finishing/coating depending on model
- Castor size: 4"-5" depending on model
- Colour can be customised

ASIAN STYLE TROLLEY 160L



Ref. No	EXT Dimension (mm)	Capacity (L)
STF19016	830x550x910	160

ASIAN STYLE TROLLEY 140L



Ref. No	EXT Dimension (mm)	Capacity (L)
STF19017	830x550x910	140

Plastic Shopping Trolleys

- Material: HDPP, metal
- Castor size: 4"-5" depending on model
- Colour can be customised

PLASTIC SHOPPING TROLLEY 90L - 210L



Ref. No	EXT Dimension (mm)	Capacity (L)
STF19018	975x460x970	90
STF19019	910x490x985	100
STF19020	980x550x1030	125
STF19021	1030x520x1060	130
STF19022	990x540x1000	160
STF19023	990x540x1055	165
STF19024	1025x550x1095	180
STF19025	1100x595x1060	200
STF19026	1040x600x1080	210

PLASTIC SHOPPING TROLLEY 100L / 125L



Ref. No	EXT Dimension (mm)	Capacity (L)
STF19027	820x490x990	100
STF19028	905x550x1050	125

Plastic Shopping Trolleys

- Material: HDPP, metal
- Castor size: 4"-5" depending on model
- Colour can be customised

PLASTIC SHOPPING TROLLEY 100L - 220L



Ref. No	EXT Dimension (mm)	Capacity (L)
STF19029	850x585x990	100
STF19030	990x580x1000	135
STF19031	1110x580x1055	175
STF19032	1120x580x1060	220

KIDS PLASTIC TROLLEY 50L



Ref. No	EXT Dimension (mm)	Capacity (L)
STF19033	600x375x720	50

Hand Basket Trolleys

- Material: Steel with zinc, chrome or powder finishing/coating depending on model
- Castor size: 3"-4" depending on model
- Colour can be customised

HAND BASKET TROLLEY



Ref. No	EXT Dimension (mm)	Castor Size (inch)
STF19034	560x486x1036	3

HAND BASKET TROLLEY



Ref. No	EXT Dimension (mm)	Castor Size (inch)
STF19035	660x450x890	3

HAND BASKET TROLLEY

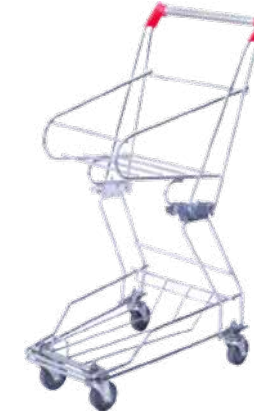


Ref. No	EXT Dimension (mm)	Castor Size (inch)
STF19036	560x510x940	3

Hand Basket Trolleys

- Material: Steel with zinc, chrome or powder finishing/coating depending on model
- Castor size: 3"-4" depending on model
- Colour can be customised

HAND BASKET TROLLEY



Ref. No	EXT Dimension (mm)	Castor Size (inch)
STF19037	560x430x970	3

HAND BASKET TROLLEY



Type	Ref. No	EXT Dimension (mm)	Castor Size (inch)
Single handle	STF19038	560x430x970	3
Double handle	STF19039	560x410x940	3

HAND BASKET TROLLEY



Ref. No	EXT Dimension (mm)	Castor Size (inch)
STF19040	560x410x940	3

Hand Basket Trolleys

- Material: Steel with zinc, chrome or powder finishing/coating depending on model
- Castor size: 3"-4" depending on model
- Colour can be customised

HAND BASKET TROLLEY



Ref. No	EXT Dimension (mm)	Castor Size (inch)
STF19041	490x390x940	3

HAND BASKET TROLLEY



Ref. No	EXT Dimension (mm)
STF19042	600x450x935

HAND BASKET TROLLEY



Ref. No	EXT Dimension (mm)
STF19043	535x410x900

Hand Basket Trolleys

- Material: Steel with zinc, chrome or powder finishing/coating depending on model
- Castor size: 3"-4" depending on model
- Colour can be customised

HAND BASKET TROLLEY



Ref. No	EXT Dimension (mm)
STF19044	650x520x1010

HAND BASKET TROLLEY



Ref. No	EXT Dimension (mm)
STF19045	600x420x945

HAND BASKET TROLLEY



Ref. No	EXT Dimension (mm)
STF19046	620x435x935

Hand Basket Trolleys

- Material: Steel with zinc, chrome or powder finishing/coating depending on model
- Castor size: 3"-4" depending on model
- Colour can be customised

HAND BASKET TROLLEY



Ref. No	EXT Dimension (mm)
STF19047	530x390x970

HAND BASKET TROLLEY



Ref. No	EXT Dimension (mm)
STF19048	690x440x940

HAND BASKET TROLLEY



Ref. No	EXT Dimension (mm)
STF19049	605x400x920

Hand Basket Trolleys

- Material: Steel with zinc, chrome or powder finishing/coating depending on model
- Castor size: 3"-4" depending on model
- Colour can be customised

HAND BASKET TROLLEY



Ref. No	EXT Dimension (mm)
STF19050	590x430x930

HAND BASKET TROLLEY



Ref. No	EXT Dimension (mm)
STF19051	820x610x1030

HAND BASKET TROLLEY



Ref. No	EXT Dimension (mm)
STF19052	600x400x920

Children's Trolleys

- Material: Steel with zinc, chrome or powder finishing/coating depending on model
- Castor size: 3"-5" depending on model
- Colour can be customised

TOY CAR SHOPPING TROLLEY WITH BASKET



Ref. No	EXT Dimension (mm)	Castor Size (inch)
STF19059	1380x590x1050	5
STF19060	1350x540x1050	4

STANDARD CHILDREN'S SHOPPING TROLLEY



Ref. No	EXT Dimension (mm)
STF19063	580x375x720

Children's Trolleys

- Material: Steel with zinc, chrome or powder finishing/coating depending on model
- Castor size: 3"-5" depending on model
- Colour can be customised

CHILDREN TROLLEY WITH FLAG



Ref. No	EXT Dimension (mm)	Castor Size (inch)
STF19061	500x350x700	3

CHILDREN WIRE SHOPPING TROLLEY



Ref. No	EXT Dimension (mm)	Castor Size (inch)
STF19062	500x350x700	3

Special Trolleys

- Material: High strength aluminium alloy
- Rubber castors with double ball bearing
- Nesting distance: 265mm
- Self-adjusting brake
- Advertising panels on frame, sides and basket

AIRPORT TROLLEY



Ref. No	EXT Dimension (mm)	Basket Size (mm)	Capacity (kg)	Castor Size (mm)	Advertising Panel Size (mm)		
					Main Panel	Side Panel	Basket Panel
STF19064	980x660x1050	520x225x150	250	Ø180	525x354	670x38	480x100 (front) 480x120 (back)

- Material: Aluminium alloy
- TPU castors with double ball bearing
- Nesting distance: 250mm
- No brakes

AIRPORT TROLLEY



Ref. No	EXT Dimension (mm)	Basket Size (mm)	Capacity (kg)	Castor Size (mm)	Advertising Panel Size (mm)
STF19065	700x500x1020	400x425x360	80	Ø125	340x375

Special Trolleys

- Material: Steel with zinc, chrome or powder finishing/coating depending on model
- Castor size: 4"-5" depending on model
- Colour can be customised

SPECIAL TROLLEY FOR WHEELCHAIR USERS



Ref. No	EXT Dimension (mm)
STF19066	750x815x955

SPECIAL TROLLEY



Ref. No	EXT Dimension (mm)
STF19067	1220x575x1060

SPECIAL TROLLEY



Ref. No	EXT Dimension (mm)
STF19068	920x460x950

Special Trolleys

- Material: Steel with zinc, chrome or powder finishing/coating depending on model
- Castor size: 4"-5" depending on model
- Colour can be customised

SPECIAL TROLLEY



Ref. No	EXT Dimension (mm)
STF19069	960x560x1010

Flat Trolleys

- Material: Steel with zinc, chrome or powder finishing/coating depending on model
- Castor size: 5"-6" depending on model
- Colour can be customised

FLAT TROLLEY



Ref. No	EXT Dimension (mm)	Castor Size (mm)
STF19070	1000x570x1060	5

Flat Trolleys

- Material: Steel with zinc, chrome or powder finishing/coating depending on model
- Castor size: 5"-6" depending on model
- Colour can be customised

FLAT TROLLEY WITH FOLDABLE TOP BASKET



Ref. No	EXT Dimension (mm)	Castor Size (mm)
STF19071	1000x640x1060	5

FLAT TROLLEY WITH FOLDABLE TOP BASKET



Ref. No	EXT Dimension (mm)	Castor Size (mm)
STF19072	1140x620x1060	5

FLAT TROLLEY



Ref. No	EXT Dimension (mm)	Castor Size (mm)
STF19073	1520x730x930	5

Flat Trolleys

- Material: Steel with zinc, chrome or powder finishing/coating depending on model
- Castor size: 5"-6" depending on model
- Colour can be customised

FLAT TROLLEY



Ref. No	EXT Dimension (mm)
STF19074	1400x795x975

5 CASTOR FLAT TROLLEY



Ref. No	EXT Dimension (mm)	Castor Size (mm)
STF19075	1677x728x948	6

FLAT TROLLEY



Ref. No	EXT Dimension (mm)
STF19076	1490x730x935

Flat Trolleys

- Material: Steel with zinc, chrome or powder finishing/coating depending on model
- Castor size: 5"-6" depending on model
- Colour can be customised

FLAT TROLLEY



Ref. No	EXT Dimension (mm)	Castor Size (mm)
STF19077	1400x740x1060	5

FLAT TROLLEY



Ref. No	EXT Dimension (mm)	Castor Size (mm)
STF19078	1170x610x1080	5

FLAT TROLLEY



Ref. No	EXT Dimension (mm)	Castor Size (mm)
STF19079	930x555x930	5

Flat Trolleys

- Material: Steel with zinc, chrome or powder finishing/coating depending on model
- Castor size: 5"-6" depending on model
- Colour can be customised

FLAT BASKET TROLLEY



Ref. No	EXT Dimension (mm)	Castor Size (mm)
STF19080	1068x640x1100	5

FLAT TROLLEY



Ref. No	EXT Dimension (mm)	Castor Size (mm)
STF19081	1020x700x850	5

FLAT TROLLEY



Ref. No	EXT Dimension (mm)
STF19082	920x650x990

Flat Trolleys

- Material: Steel with zinc, chrome or powder finishing/coating depending on model
- Castor size: 5"-6" depending on model
- Colour can be customised

FLAT TROLLEY



Ref. No	EXT Dimension (mm)
STF19084	980x680x1090

5 CASTOR FLAT TROLLEY



Ref. No	EXT Dimension (mm)
STF19085	980x680x1090

FLAT TROLLEY



Ref. No	EXT Dimension (mm)
STF19086	980x680x1090
STF19083	980x680x1090



SHOPPING BASKETS

Plastic shopping baskets p.188
 Wire shopping baskets p.194
 Rolling baskets p.195

Plastic Shopping Baskets

- Material: HDPP
- Colour can be customised
- With 1 colour logo printing

21L DOUBLE HANDLE SHOPPING BASKET



Ref. No	EXT Dimension (mm)	Capacity (L)
STF20001	425x295x225	21

30L DOUBLE HANDLE SHOPPING BASKET



Ref. No	EXT Dimension (mm)	Capacity (L)
STF20002	480x320x270	30

22L / 30L DOUBLE HANDLE SHOPPING BASKET WITH CLOSED BOTTOM



Ref. No	EXT Dimension (mm)	Capacity (L)
STF20003	400x290x210	22
STF20009	450x330x250	30

Plastic Shopping Baskets

- Material: HDPP
- Colour can be customised
- With 1 colour logo printing

22L / 30L DOUBLE HANDLE SHOPPING BASKET



Ref. No	EXT Dimension (mm)	Capacity (L)
STF20004	400x290x210	22
STF20007	450x330x250	30

31L DOUBLE HANDLE SHOPPING BASKET



Ref. No	EXT Dimension (mm)	Capacity (L)
STF20010	480x330x255	31

33L DOUBLE HANDLE SHOPPING BASKET



Ref. No	EXT Dimension (mm)	Capacity (L)
STF20012	505x330x235	33

Plastic Shopping Baskets

- Material: HDPP
- Colour can be customised
- With 1 colour logo printing

33L DOUBLE HANDLE SHOPPING BASKET



Ref. No	EXT Dimension (mm)	Capacity (L)
STF20014	480x320x265	33

33L DOUBLE HANDLE SHOPPING BASKET



Ref. No	EXT Dimension (mm)	Capacity (L)
STF20015	480x320x265	33

21L / 34L SINGLE HANDLE SHOPPING BASKET



Ref. No	EXT Dimension (mm)	Capacity (L)
STF20016	425x295x225	21
STF20020	490x335x260	34

Plastic Shopping Baskets

- Material: HDPP
- Colour can be customised
- With 1 colour logo printing

22L SINGLE HANDLE SHOPPING BASKET



Ref. No	EXT Dimension (mm)	Capacity (L)
STF20017	445x290x245	22

30L SINGLE HANDLE SHOPPING BASKET



Ref. No	EXT Dimension (mm)	Capacity (L)
STF20018	470x310x250	30

33L SINGLE HANDLE SHOPPING BASKET



Ref. No	EXT Dimension (mm)	Capacity (L)
STF20019	460x335x275	33

Plastic Shopping Baskets

- Material: HDPP
- Colour can be customised
- With 1 colour logo printing

35L SINGLE HANDLE SHOPPING BASKET



Ref. No	EXT Dimension (mm)	Capacity (L)
STF20021	470x320x285	35

- Material: HDPP
- Handle with chrome treatment
- Colour can be customised
- With 1 colour logo printing

22L DOUBLE HANDLE SHOPPING BASKET WITH CLOSED BOTTOM



Ref. No	EXT Dimension (mm)	Capacity (L)
STF20005	400x290x210	22

25L DOUBLE HANDLE SHOPPING BASKET WITH CLOSED BOTTOM



Ref. No	EXT Dimension (mm)	Capacity (L)
STF20006	425x310x235	25

Plastic Shopping Baskets

- Material: HDPP
- Handle with chrome treatment
- Colour can be customised
- With 1 colour logo printing

30L DOUBLE HANDLE SHOPPING BASKET



Ref. No	EXT Dimension (mm)	Capacity (L)
STF20008	450x330x250	30

31L DOUBLE HANDLE SHOPPING BASKET



Ref. No	EXT Dimension (mm)	Capacity (L)
STF20011	480x330x255	31

33L DOUBLE HANDLE SHOPPING BASKET

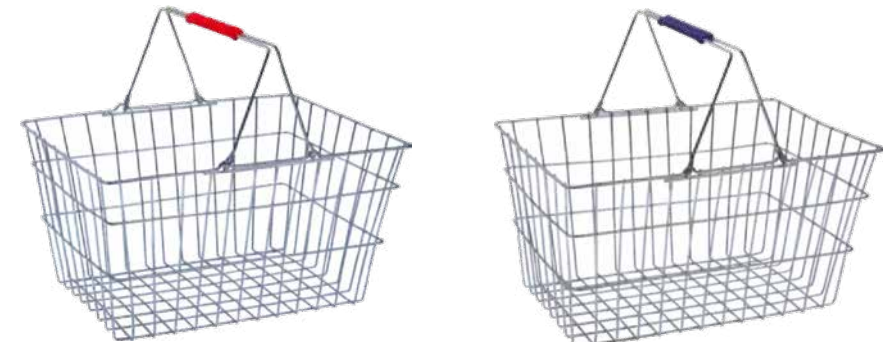


Ref. No	EXT Dimension (mm)	Capacity (L)
STF20013	505x330x235	33

Wire Shopping Baskets

- Material: Steel with zinc or chrome finishing/ coating depending on model
- Colour of grip can be customised

DOUBLE HANDLE SHOPPING BASKET



Ref. No	EXT Dimension (mm)
STF20022	400x300x200
STF20023	450x300x180

SINGLE HANDLE SHOPPING BASKET



Ref. No	EXT Dimension (mm)
STF20024	450x320x200

Rolling Baskets

- Material: HDPP or HDPE depending on model
- Handle in plastic, ABS or aluminium
- 2 or 4 PU wheels depending on model
- Colour can be customised
- With 1 colour logo printing

31L ROLLING BASKET WITH TELESCOPIC HANDLE



Ref. No	EXT Dimension (mm)	Capacity (L)	Handle Type	No. of Wheels
STF20027	460x350x420	31	Aluminium	2

30L ROLLING BASKET



Ref. No	EXT Dimension (mm)	Capacity (L)	Handle Type	No. of Wheels
STF20028	600x345x370	30	ABS	4

45L ROLLING BASKET



Ref. No	EXT Dimension (mm)	Capacity (L)	Handle Type	No. of Wheels
STF20029	610x390x400	45	ABS	4

Rolling Baskets

- Material: HDPP or HDPE depending on model
- Handle in plastic, ABS or aluminium
- 2 or 4 PU wheels depending on model
- Colour can be customised
- With 1 colour logo printing

45L ROLLING BASKET



Ref. No	EXT Dimension (mm)	Capacity (L)	Handle Type	No. of Wheels
STF20030	640x420x435	55	ABS	4

55L ROLLING BASKET



Ref. No	EXT Dimension (mm)	Capacity (L)	Handle Type	No. of Wheels
STF20031	650x435x450	55	Plastic	4

60L ROLLING BASKET



Ref. No	EXT Dimension (mm)	Capacity (L)	Handle Type	No. of Wheels
STF20032	650x400x460	60	ABS	4

Rolling Baskets

- Material: HDPP or HDPE depending on model
- Handle in plastic, ABS or aluminium
- 2 or 4 PU wheels depending on model
- Colour can be customised
- With 1 colour logo printing

80L ROLLING BASKET



Ref. No	EXT Dimension (mm)	Capacity (L)	Handle Type	No. of Wheels
STF20033	730x485x530	80	ABS	4

35L / 45L ROLLING BASKET



Ref. No	EXT Dimension (mm)	Capacity (L)	Handle Type	No. of Wheels
STF20034	530x365x375	35	ABS	4
STF20035	570x420x450	45	ABS	4

52L ROLLING BASKET WITH TELESCOPIC HANDLE



Ref. No	EXT Dimension (mm)	Capacity (L)	Handle Type	No. of Wheels
STF20036	405x390x520	52	Aluminium	2

Rolling Baskets

- Material: HDPP or HDPE depending on model
- Handle in plastic, ABS or aluminium
- 2 or 4 PU wheels depending on model
- Colour can be customised
- With 1 colour logo printing

42L ROLLING BASKET WITH TELESCOPIC HANDLE



Ref. No	EXT Dimension (mm)	Capacity (L)	Handle Type	No. of Wheels
STF20037	465x350x460	42	Aluminium alloy	3

55L ROLLING BASKET WITH TELESCOPIC HANDLE



Ref. No	EXT Dimension (mm)	Capacity (L)	Handle Type	No. of Wheels
STF20038	530x380x430	55	Plastic	2

65L ROLLING BASKET



Ref. No	EXT Dimension (mm)	Capacity (L)	No. of Wheels
STF20039	500x460x870	65	3

Rolling Baskets

- Material: HDPP or HDPE depending on model
- Handle in plastic, ABS or aluminium
- 2 or 4 PU wheels depending on model
- Colour can be customised
- With 1 colour logo printing

65L ROLLING BASKET WITH TELESCOPIC HANDLE



Ref. No	EXT Dimension (mm)	Capacity (L)	Handle Type	No. of Wheels
STF20040	450x390x850	65	Plastic	4



SHOPPING BAGS & FOOD CONTAINERS

- PP reusable shopping bags p.201
- Cotton and jute shopping bags p.201
- Paper bags and packaging p.202
- Compostable starch bags p.203
- Plastic bags p.203
- Carton food packaging p.204
- Bagasse food containers p.204
- Aluminium food containers p.205
- Plastic food containers p.205

PP REUSABLE SHOPPING BAGS

- Material: PP or R-PET depending on model
- Size, colour and design can be customised

REUSABLE SHOPPING BAGS



Ref. No
STF21000

COTTON AND JUTE SHOPPING BAGS

- Material: Cotton or jute fabric depending on model
- Size, colour and design can be customised

COTTON / JUTE SHOPPING BAGS



Ref. No
STF21001

PAPER BAGS AND PACKAGING

- Size, colour and design can be customised

PAPER SHOPPING BAGS



Ref. No
STF21002

PAPER PACKAGING



Ref. No
STF21003

COMPOSTABLE STARCH BAGS

- Material: Starch derived
- Size, thickness and design can be customised

COMPOSTABLE STARCH BAGS



Ref. No
STF21005

PLASTIC BAGS

- Material: HDPE, LDPE
- Size, thickness and design can be customised

PLASTIC BAGS



Ref. No
STF21006

CARTON FOOD PACKAGING

- Size, colour and design can be customised

CARTON FOOD PACKAGING



Ref. No
STF21007

BAGASSE FOOD CONTAINERS

- Size and design can be customised

BAGASSE FOOD CONTAINERS



Ref. No
STF21008

ALUMINIUM FOOD CONTAINERS

ALUMINIUM FOOD CONTAINERS



Ref. No
STF21009

PLASTIC FOOD CONTAINERS

- Material: PP

PLASTIC FOOD CONTAINERS



Ref. No
STF21010



a brand of SIS Group



China Factories

Ningbo

Tangjia Area, Houcangcun
Haishu District
Ningbo, Zhejiang

Qingdao

Bei Gong Yuan Industrial Park
Jiazhou
Qingdao, Shandong

Asia Offices

Shanghai

Jiufu Technology Park
Office 601, Building 8
3408 Xiupu Road
201315 Shanghai

Hong Kong

Unit E, 11F, Tower B
Billion Centre
1 Wang Kwong Road
Kowloon Bay, Hong Kong

Bangkok

24F Chamchuri Square
19 Phaya Thai Road
Pathumwan
10330 Bangkok

Singapore

1 Coleman Street
The Adelphi, 10-06
179803 Singapore

Europe Office

27 Avenue de l'Opéra
75001 Paris
France

Any questions? Reach us at

Telephone
+86 153 1751 4906

WhatsApp
+86 153 1751 4906

Wechat
sisgroup

Email
sales@store-fit.com